

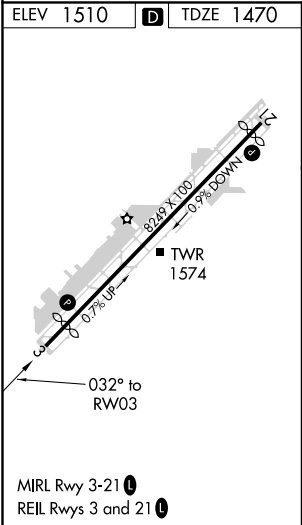
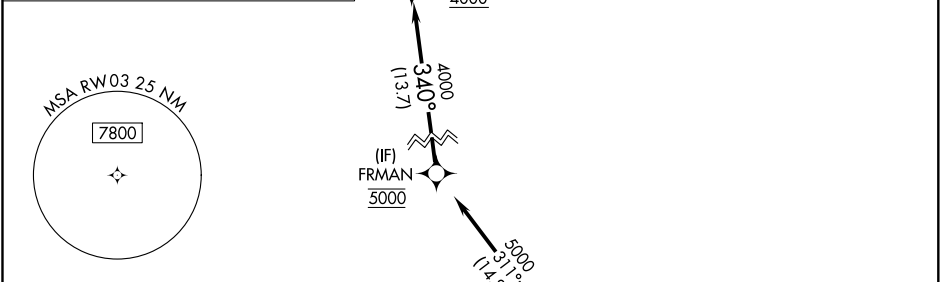
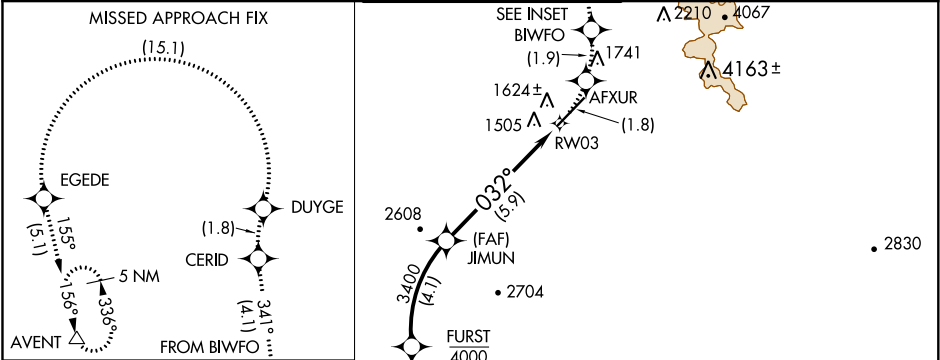
APP CRS	Rwy Idg	7110
032°	TDZE	1470
	Apt Elev	1510

RNAV (RNP) Z RWY 3
SCOTTSDALE (SDL)

RF and GPS required. Visibility reduction by helicopters NA.
For uncompensated Baro-VNAV systems, procedure NA below
1°C (31°F) or above 54°C (130°F). When local altimeter setting not
received procedure NA. Missed approach requires RNP less than 1.0.

MISSED APPROACH: Climb to 5000 via left turn to
AFXUR, and via left turn to BIWFO, and via track 341°
to CERID, and via right turn to DUYGE, and via left turn
to EGEDE, and via track 155° to AVENT and hold.

ATIS ★ 118.6	PHOENIX APP CON 120.7 239.0	SCOTTSDALE TOWER ★ 119.9 (CTAF) 0	GND CON 121.6	CLNC DEL 124.8
-----------------	--------------------------------	--------------------------------------	------------------	-------------------



VGSI and RNAV glidepath not coincident (VGSI Angle 4.00/TCH 59).			
FRMAN	FURST	JIMUN	RW03
5000	4000	3400	032°
Procedure Turn NA			
GP 3.00°			
TCH 60			
13.7 NM	4.1 NM	5.9 NM	
CATEGORY	A	B	C
RNP 0.30 DA	1829-1¼	359 (400-1¼)	NA
AUTHORIZATION REQUIRED			

SW-4, 03 DEC 2020 to 31 DEC 2020

SW-4, 03 DEC 2020 to 31 DEC 2020