

WAAS CH <b>50426</b> <b>W35A</b>	APP CRS <b>358°</b>	Rwy Idg TDZE <b>4230</b> Apt Elev <b>4230</b>
--	------------------------	---

RNAV (GPS) RWY 35

BRIGHAM CITY RGNL (BMC)

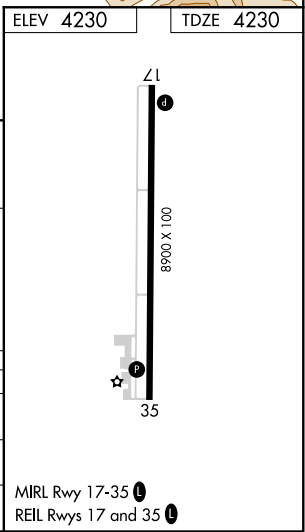
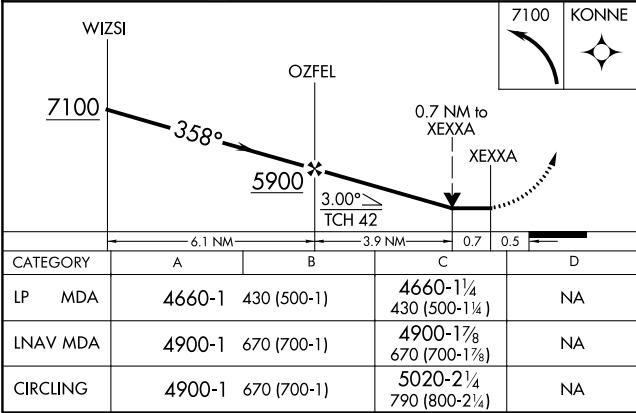
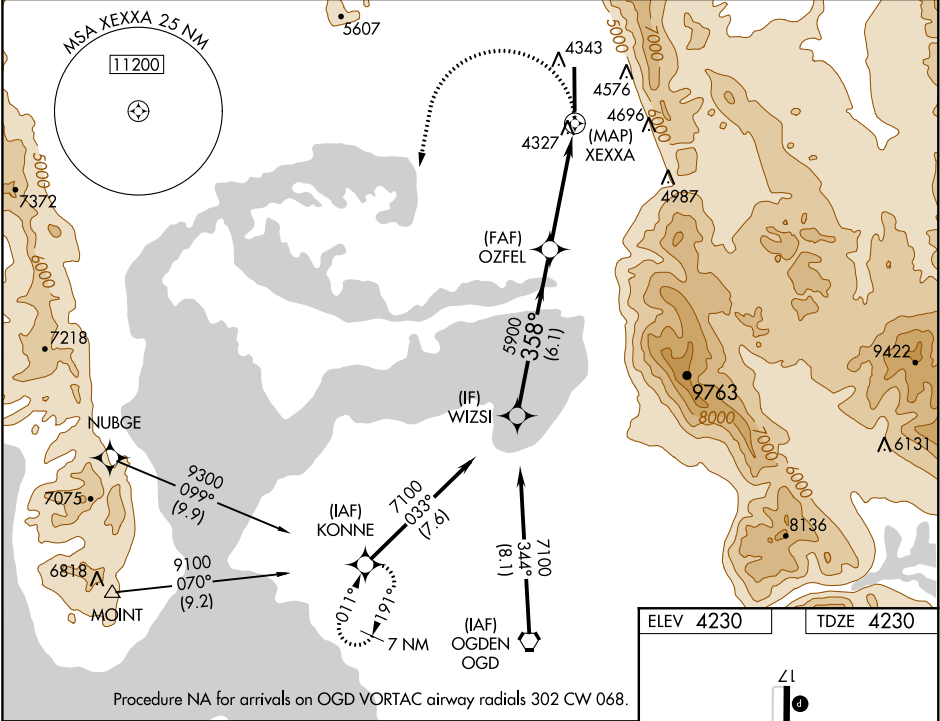
▼

NA

When local altimeter setting not received, use Ogden altimeter setting and increase all MDA 100 feet, increase LP Cat C visibility ¼ mile, increase LNAV Cat B visibility ¼ mile, and Cat C visibility ¾ mile, increase Circling Cat B visibility ¼ mile, and Cat C visibility ½ mile.  
DME/DME RNP-0.3 NA. VDP NA with Ogden altimeter setting. Rwy 35 helicopter visibility reduction below ¾ SM NA.

MISSED APPROACH:  
Climbing left turn to 7100  
direct KONNE and hold.

AWOS-3 <b>135.075</b>	SALT LAKE CITY APP CON <b>121.1 319.25</b>	CLNC DEL <b>126.0</b>	UNICOM <b>123.05 (CTAF) 0</b>
--------------------------	---	--------------------------	----------------------------------



SW-4, 03 DEC 2020 to 31 DEC 2020

SW-4, 03 DEC 2020 to 31 DEC 2020