

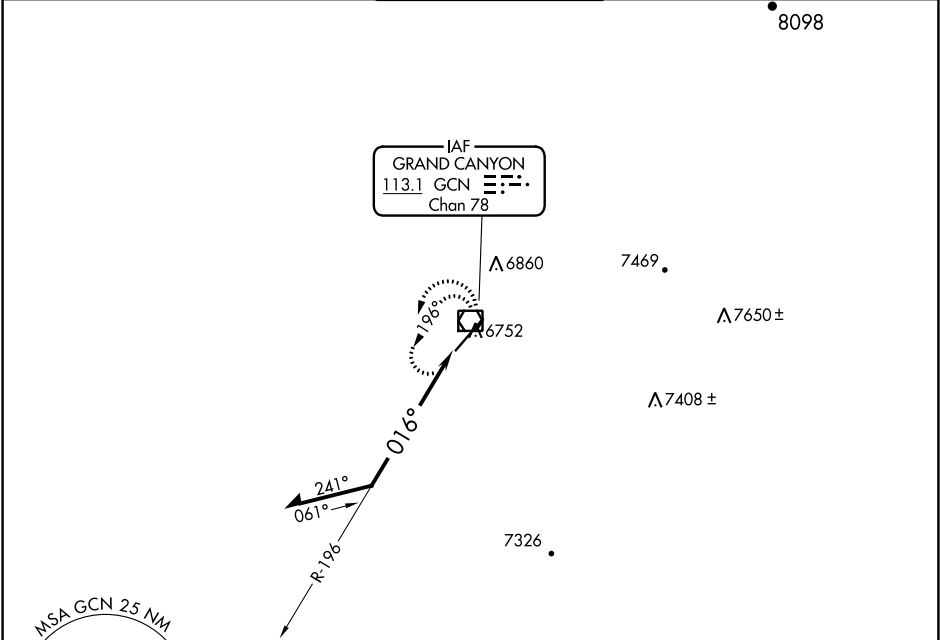
VOR/DME GCN	APP CRS	Rwy Idg	8999
113.1	016°	TDZE	6556
Chan 78		Apt Elev	6609

VOR RWY 3
GRAND CANYON NATIONAL PARK (GCN)

⚠ Rwy 3 helicopter visibility reduction below ¾ SM NA.

MISSED APPROACH: Climb to 9100 in GCN VOR/DME holding pattern.

ATIS 124.3	LOS ANGELES CENTER 124.85 319.2	CANYON TOWER ★ 119.0 (CTAF) 0	GND CON 121.9	UNICOM 122.95
----------------------	---	---	-------------------------	-------------------------



MSA GCN 25 NM

10500

080° 260°

9200

Descend in GCN VOR/DME holding pattern to 11 000 before commencing procedure turn.

Remain within 10 NM

GCN VOR/DME

8500

196°

016°

9100 GCN

CATEGORY	A	B	C	D
S-3	7180-1 624 (600-1)		7180-1¾ 624 (600-1¾)	
CIRCLING	7180-1 571 (600-1)	7200-1 591 (600-1)	7280-2 671 (700-2)	7620-3 1011 (1100-3)

ELEV 6609 D TDZE 6556

REIL Rwy 21

MIRL Rwy 3-21 0

TWR

016° to VOR/DME

0.7% UP

0.7% DOWN

016° to VOR/DME

SW-4, 03 DEC 2020 to 31 DEC 2020

SW-4, 03 DEC 2020 to 31 DEC 2020