

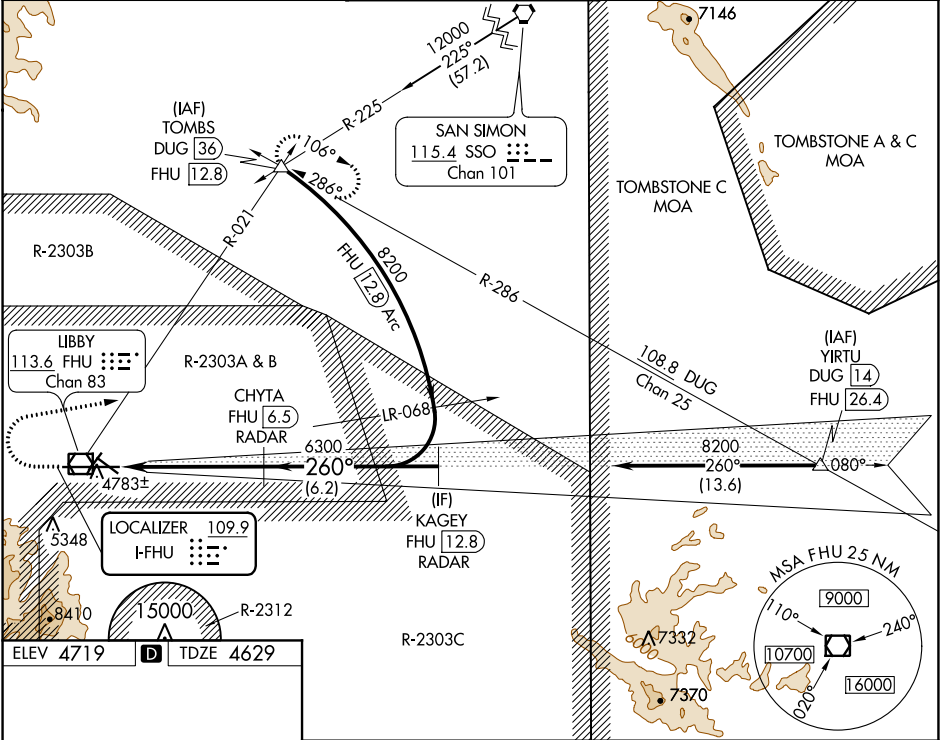


LOC I-FHU	APP CRS	Rwy Idg	12001
109.9	260°	TDZE	4629
		Apt Elev	4719

ILS or LOC RWY 26
SIERRA VISTA MUNI-LIBBY AAF (FHU)

DME or RADAR required.		MISSED APPROACH: Climb to 5300 then climbing right turn to 9500 on heading 067° and FHU VOR/DME R-021 to TOMBS INT/DUG 36 DME and hold, continue climb-in-hold to 9500.
	Circling NA south of Rwy 8 and 30.	
		
ASR/PAR		

ATIS	LIBBY AAF GCA*	LIBBY TOWER*	GND CON	UNICOM
134.75 263.025	127.05 254.35	124.95 (CTAF) 284.75	121.7 268.7	122.95



ELEV 4719	TDZE 4629
HIRL Rwy 8-26	
MIRL Rwy 3-21 and 12-30	
FAF to MAP 5.2 NM	
Knots	60 90 120 150 180
Min:Sec	5:12 3:28 2:36 2:05 1:44

5300	9500	FHU R-021	TOMBS	VGSI and ILS glidepath not coincident (VGSI Angle 3.00/TCH 80).	KAGEY FHU 12.8 RADAR
hdg 067°					
6300	8200	260°	6300	5.2 NM	6.2 NM
GS 3.00°	TCH 49				
CATEGORY	A	B	C	D	
S-ILS 26	4829-¾ 200 (200-¾)				
S-LOC 26	5020-1	391 (400-1)	5020-1¼	391 (400-1¼)	
CIRCLING	5160-1	441 (500-1)	5180-1	461 (500-1)	5180-1½ 461 (500-1½) 5280-2 561 (600-2)

SW-4, 03 DEC 2020 to 31 DEC 2020

SW-4, 03 DEC 2020 to 31 DEC 2020