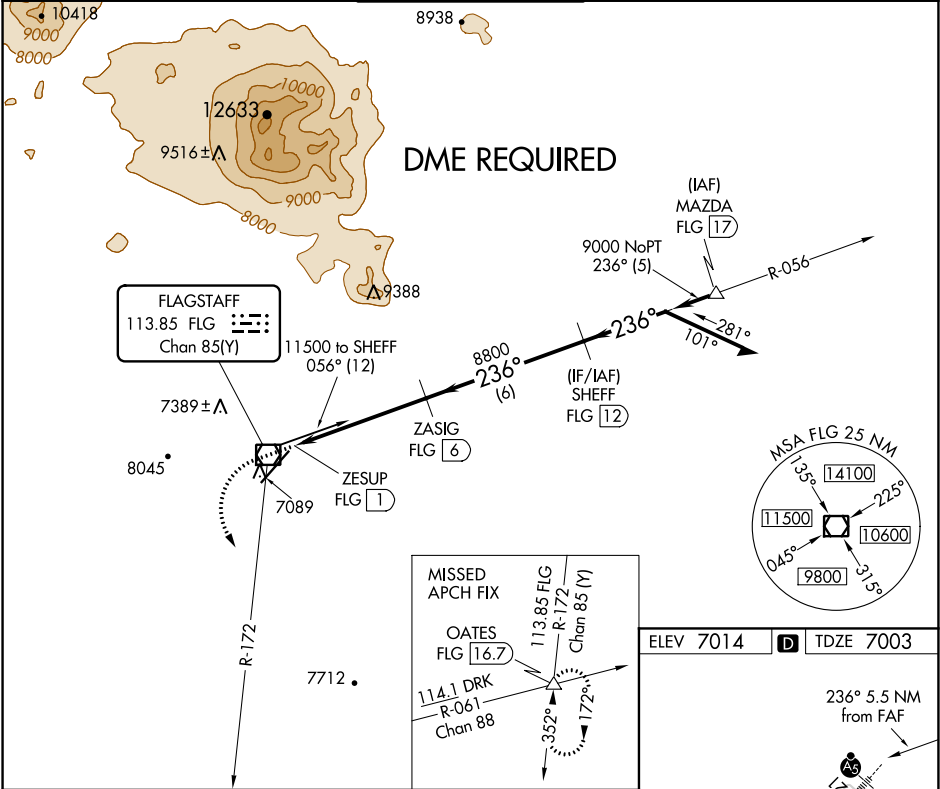


VOR/DME FLG	APP CRS	Rwy Idg
113.85	236°	7000
Chan 85(Y)		TDZE 7003
		Apt Elev 7014

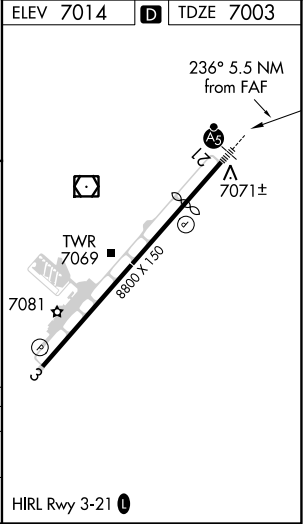
VOR RWY 21
FLAGSTAFF PULLIAM (FLG)

<p>V A</p> <p>Rwy 21 helicopter visibility reduction below 1 SM NA. DME required. Inop table does not apply to S-21 Cats A/B. Night landing: Rwy 21, operational VGSI required, remain on or above VGSI glidepath until threshold.</p>	<p>MALSR</p> <p>AS</p>	<p>MISSED APPROACH: Climbing left turn to 11000 on heading 130° and FLG R-172 to OATES INT/16.7 DME, continue climb-in-hold.</p>
--	-------------------------------	--

ATIS 125.8	PHOENIX APP CON 126.375 236.775	FLAGSTAFF TOWER ★ 134.55 (CTAF) U 239.25	GND CON 121.9	UNICOM 122.95
---------------	------------------------------------	--	------------------	------------------



11000 hdg 130°	FLG R-172	OATES △	SHEFF FLG 12	Remain within 10 NM
ZESUP FLG 1	ZASIG FLG 6	3.00° TCH 51	8800	9000
0.5	5 NM	6 NM	9700	
CATEGORY	A	B	C	D
S-21	7520-1	517 (600-1)		
CIRCLING	7520-1 506 (600-1)	7560-1 546 (600-1)	8100-3 1086 (1100-3)	8560-3 1546 (1600-3)



SW-4, 03 DEC 2020 to 31 DEC 2020

SW-4, 03 DEC 2020 to 31 DEC 2020