

VOR/DME or TACAN RWY 14

VORTAC TQQ <b>113.0</b> Chan <b>77</b>	APCH CRS <b>145°</b>	Rwy Idg <b>12,001</b> THRE <b>5473</b> Arpt Elev <b>5550</b>
--	-------------------------	--

AL-3188 [USAF]

TONOPAH TEST RANGE (KTNX)

**T** \* When ALS inop, increase CAT AB vis to 1 mile,  
CAT CDE vis to 1 3/8 miles.  
\*\* Circling not authorized West of Rwy 32.



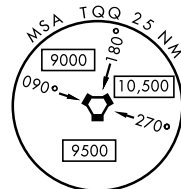
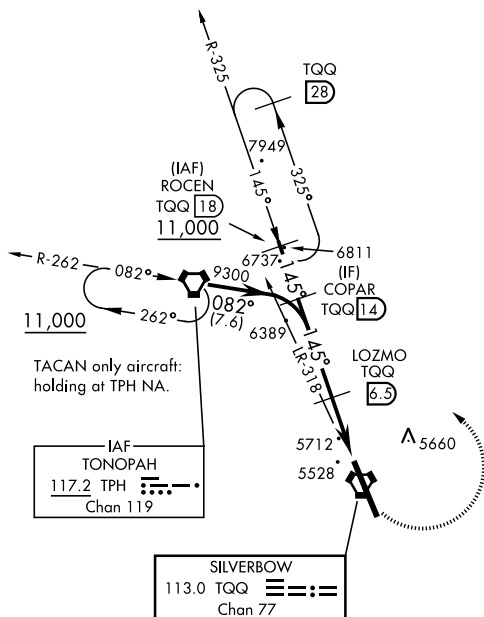
**MISSED APPROACH:** Turn left climbing to 11,000 via TQQ R-325 to ROCEN and hold, continue climb-in-hold to 11,000.

AWOS 113.0	NELLIS CONTROL 119.35 254.4	SILVERBOW TOWER ★ 124.75 257.95 0	GND CON 127.25 335.5
---------------	--------------------------------	--------------------------------------	-------------------------

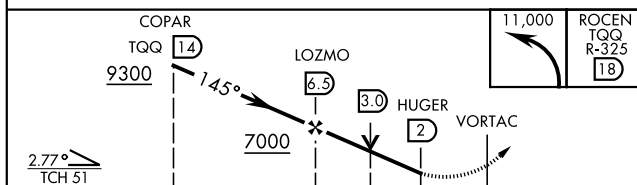
**CAUTION:** High terrain 3 NM W of Rwy.  
Unlit terrain 5558' MSL, 200' prior to Rwy  
32 threshold, 200' left of centerline.

When VGSI inop, procedure NA at night.  
 USAF ONLY: When Rwy 14 VGSI inop,  
 straight-in Rwy 14 authorized at night with  
 MAJCOM A3 approval.

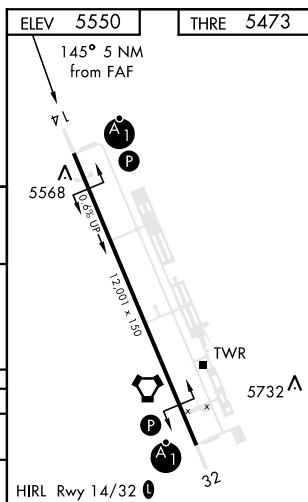
**CAUTION:** When Rwy 32 VGSI inop, circling to Rwy 32 NA at night.



EMERG SAFE ALT 100 NM 16,600



		← 4.5 NM →		5	
CATEGORY	A	B	C	D	E
S-14 *	5980-½ 507 (500-½)		5980-1 507 (500-1)		
<b>C</b> CIRCLING**	6040-1 490 (500-1)		6040-1½ 490 (500-1½)		6100-2 550 (600-2)



TONOPAH, NEVADA

37°47'N - 116°47'W

TONOPAH TEST RANGE (KTNX)

VOR/DME or TACAN RWY 14

Amdt 3 09JAN14

SW-4, 03 DEC 2020 to 31 DEC 2020

SW-4, 03 DEC 2020 to 31 DEC 2020