



18200

TONOPAH TWO DEPARTURE (TPH2•TPH)

SHL-3188 [USAF]

TONOPAH TEST RANGE (KTNX)

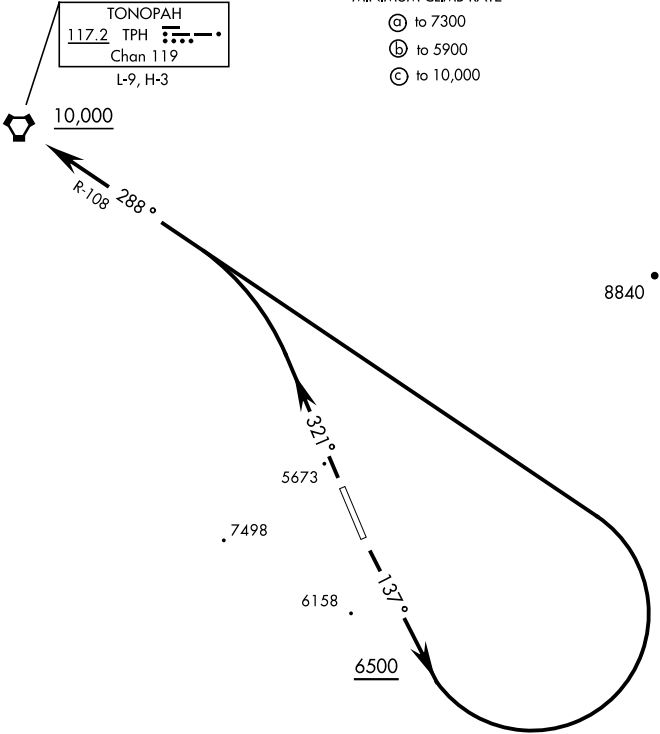
TONOPAH, NEVADA

GND CON
127.25 335.5
SILVERBOW TOWER ★
124.75 257.95
NELLIS CONTROL
119.35 254.4

Rwy	Knots	60	120	180	240	300	360
14 (a)	V/V(fpm)	220	440	660	880	1100	1320
32 (b)	V/V(fpm)	260	520	780	1040	1300	1560
32 (c)	V/V(fpm)	261	522	783	1044	1305	1566

MINIMUM CLIMB RATE

- (a) to 7300
- (b) to 5900
- (c) to 10,000



DEPARTURE ROUTE DESCRIPTION

TAKE-OFF RWY 14: Climb heading 137°, when leaving 6500 turn left direct TPH VORTAC. Cross TPH at or above 10,000.

TAKE-OFF RWY 32: Climb heading 321° to intercept TPH VORTAC R-108 direct TPH. Cross TPH at or above 10,000.

TONOPAH TWO DEPARTURE (TPH2•TPH)

TONOPAH, NEVADA

TONOPAH TEST RANGE (KTNX)



SW-4, 03 DEC 2020 to 31 DEC 2020

SW-4, 03 DEC 2020 to 31 DEC 2020