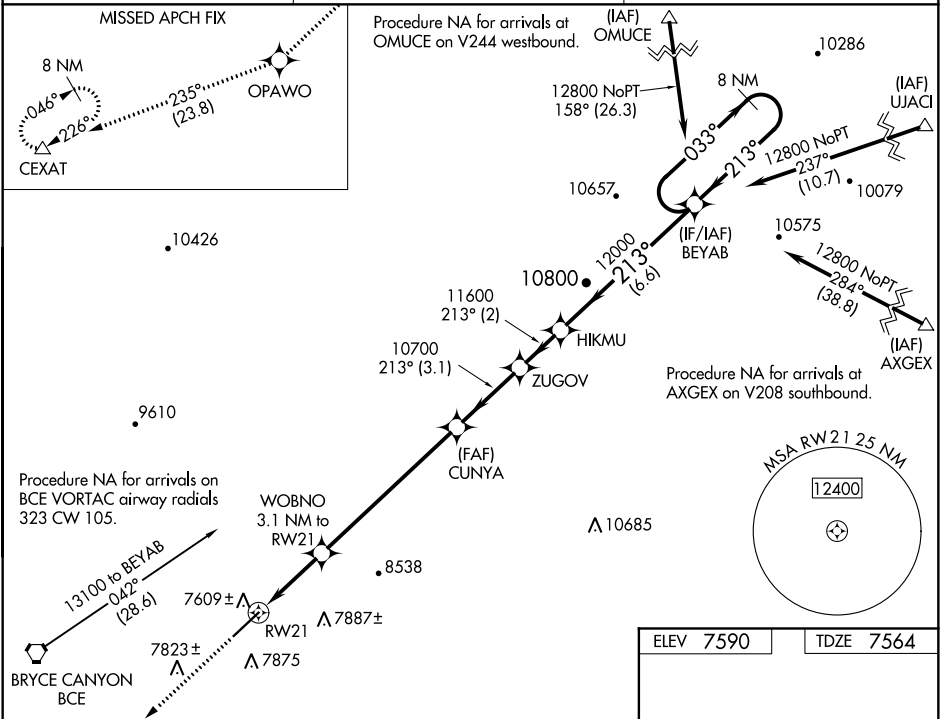


WAAS CH 99516 W21A	APP CRS 213°	Rwy Idg TDZE 7394 7564 Apt Elev 7590
--	------------------------	--

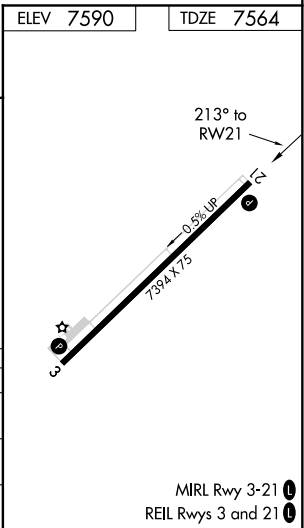
RNAV (GPS) RWY 21
BRYCE CANYON (BCE)

RNP APCH. ▼ ❄ -30°C	For uncompensated Baro-VNAV systems, LNAV/VNAV NA below -30°C or above 54°C. When local altimeter setting not received, procedure NA. Rwy 21 helicopter visibility reduction below ¾ SM NA.	MISSED APPROACH: Climb to 12300 direct OPAWO and on track 235° to CEXAT and hold.
---------------------------	---	---

ASOS 135.475	SALT LAKE CITY CENTER 133.6 269.25	UNICOM 122.80 (CTAF) 0
------------------------	--	----------------------------------



12300	OPAWO	tr 235°	CEXAT	VGSI and RNAV glidepath not coincident (VGSI Angle 3.00/TCH 55).	8 NM Holding Pattern
*LNAV only	WOBNO 3.1 NM to RW21	CUNYA	ZUGOV	HIKMU	BEYAB
*1.5 NM to RW21	10700	11600	12000	12800	GP 3.00° TCH 40
1.5	1.6	6.7 NM	3.1 NM	2 NM	6.6 NM
CATEGORY	A	B	C	D	
LPV DA	7889-1 1/8	325 (300-1 1/8)		NA	
LNAV/VNAV DA	8016-1 1/2	452 (500-1 1/2)		NA	
LNAV MDA	8040-1	476 (500-1)	8040-1 3/8 476 (500-1 3/8)	NA	



SW-4, 03 DEC 2020 to 31 DEC 2020

SW-4, 03 DEC 2020 to 31 DEC 2020