

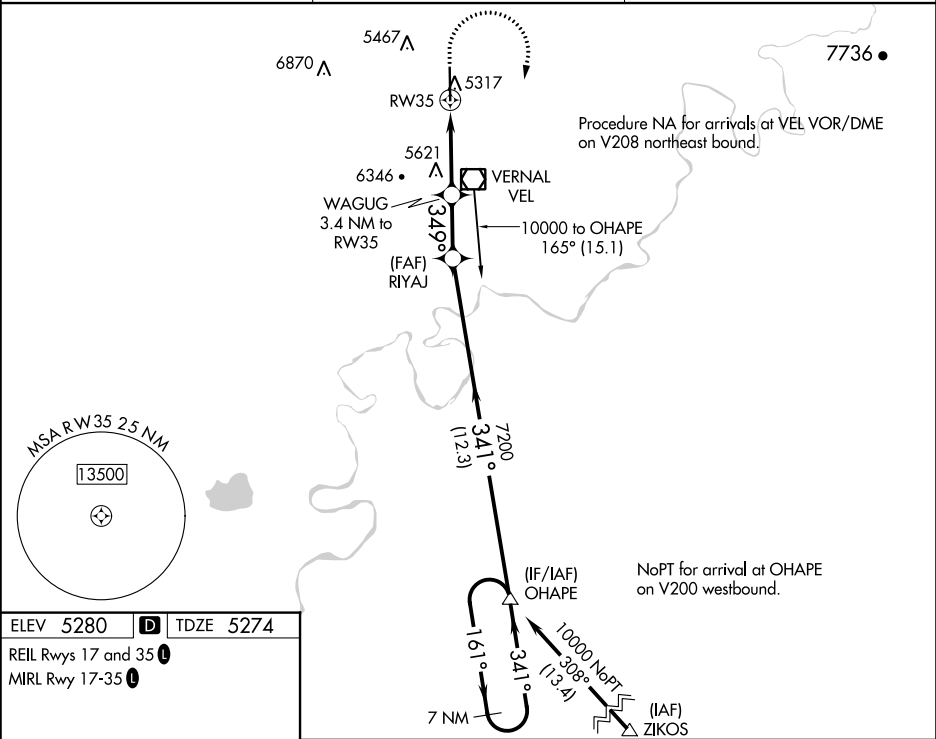
APP CRS	Rwy Idg	7000
349°	TDZE	5274
	Apt Elev	5280

RNAV (GPS) Y RWY 35

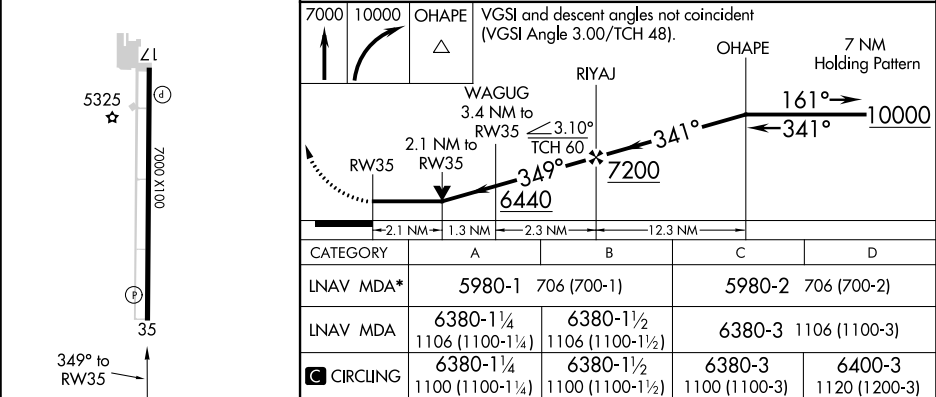
VERNAL RGNL (VEL)

<div><div><div>⚠</div><div>⚠</div><div>⚠</div></div><div>-27°C</div></div> <div>Circling NA west of Rwy 17-35. DME/DME RNP-0.3 NA. VDP NA when using Roosevelt altimeter setting. Rwy 35 helicopter visibility reduction below ¾ SM NA. When local altimeter setting not received, use Roosevelt altimeter setting and increase MDA 80 feet and increase *LNAV Cat B visibility ¼ SM and Cat C/D visibility ½ SM.</div>	<div>MISSED APPROACH: Climb to 7000 then climbing right turn to 10000 direct OHAPE and hold.</div> <div>*Missed approach requires minimum climb of 300 feet per NM to 7500.</div>
---	---

ASOS 135.175	SALT LAKE CENTER 119.95 377.15	UNICOM 122.7 (CTAF)
-----------------	-----------------------------------	------------------------



ELEV 5280	D	TDZE 5274
REIL Rws 17 and 35		
MIRL Rwy 17-35		



RNAV (GPS) Y RWY 35

SW-4, 03 DEC 2020 to 31 DEC 2020

SW-4, 03 DEC 2020 to 31 DEC 2020