

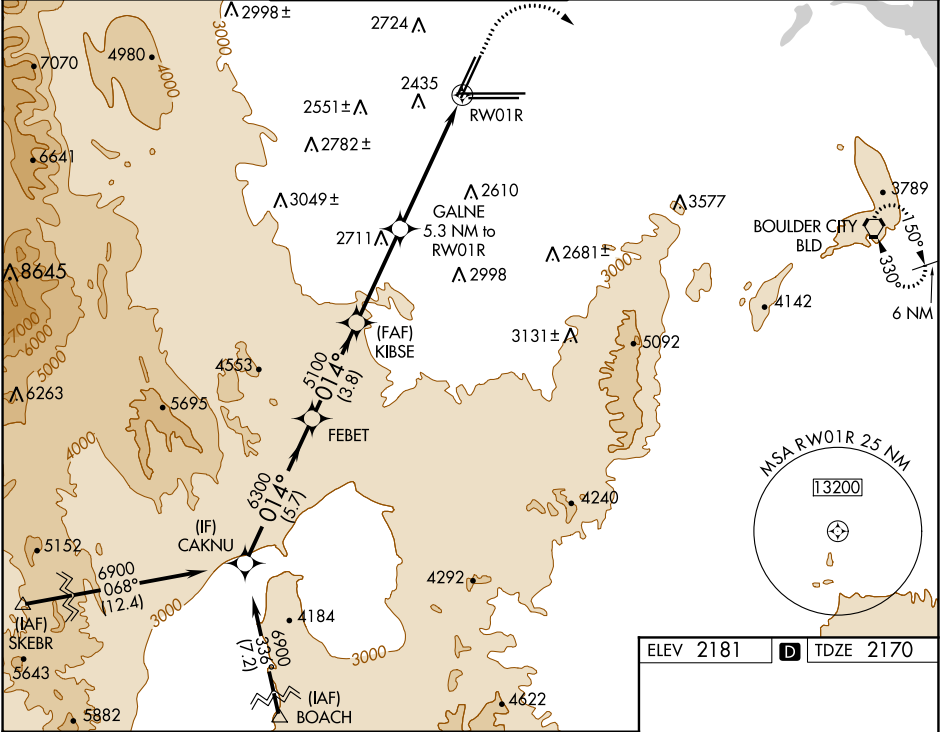
WAAS CH <b>42800</b> <b>W01A</b>	APP CRS <b>014°</b>	Rwy Idg TDZE Apt Elev	<b>8782</b> <b>2170</b> <b>2181</b>
--	------------------------	-----------------------------	---

RNAV (GPS) RWY 1R  
MC CARRAN INTL (LAS)

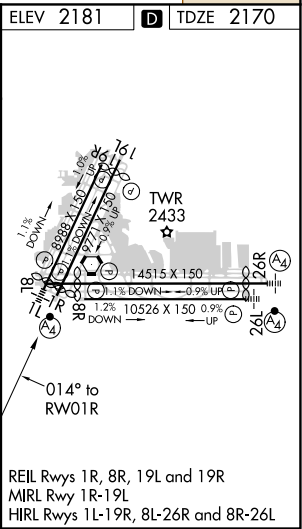
**V** For uncompensated Baro-VNAV systems, LNAV/VNAV NA below -1°C (31°F) or above 52°C (126°F). Rwy 1R helicopter visibility reduction below ¾ SM NA. DME/DME RNP-0.3 NA.

**MISSED APPROACH:** Climb to 2800 then climbing right turn to 6000 direct BLD VORTAC and hold, continue climb-in-hold to 6000.

D-ATIS <b>132.4</b>	LAS VEGAS APP CON <b>125.025 379.15 (West)</b> <b>125.6 282.2 (East)</b>	LAS VEGAS TOWER <b>118.75 257.8 (Rwy 1L/19R, 1R/19L)</b> <b>119.9 257.8 (Rwy 8L/26R, 8R/26L)</b>	GND CON <b>121.1 270.8 E of 1R/19L</b> <b>121.9 254.3 W of 1R/19L</b>	CLNC DEL <b>118.0</b>	CPDLC
------------------------	--	--	---	--------------------------	-------



CAKNU		VGSI and RNAV glidepath not coincident (VGSI Angle 3.00/TCH 76).		2800	6000	BLD
GP 3.00° TCH 60		6900	6300	5100	*3900	
5.7 NM		3.8 NM	3.7 NM	3.4 NM	1.9 NM	
CATEGORY	A	B	C	D		
LPV DA	2468-7/8		298 (300-7/8)			
LNAV/VNAV DA	2633-11½		463 (500-1½)			
LNAV MDA	2860-1 690 (700-1)		2860-2 690 (700-2)			
CIRCLING	3020-1¼ 839 (900-1¼)	3040-1¼ 859 (900-1¼)	3100-2¾ 919 (1000-2¾)	3540-3 1359 (1400-3)		



SW-4, 03 DEC 2020 to 31 DEC 2020

SW-4, 03 DEC 2020 to 31 DEC 2020