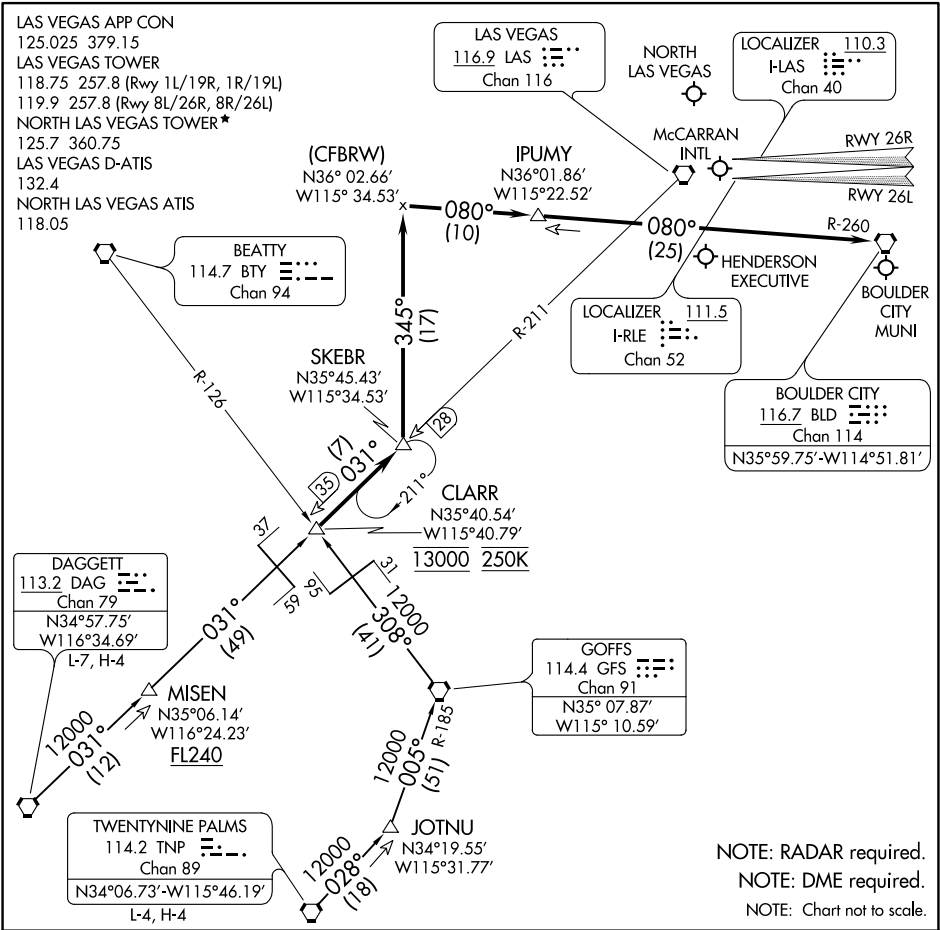


CLARR THREE ARRIVAL

AL-662 (FAA)

LAS VEGAS, NEVADA



ARRIVAL ROUTE DESCRIPTION

DAGGETT TRANSITION (DAG.CLARR3): From over DAG VORTAC via DAG R-031 and LAS R-211 to CLARR. Thence. . .

TWENTYNINE PALMS TRANSITION (TNP.CLARR3): From over TNP VORTAC via TNP R-028 to JOTNU, then via GFS R-185 to GFS VORTAC, then via GFS R-308 and BTY R-126 to CLARR. Thence. . .

. . . From over CLARR on LAS R-211 to SKEBR. Thence. . .

LANDING MC CARRAN INTL: on heading 345° to intercept the BLD R-260 to BLD VORTAC. Rwy 11L/R, 8L/R, and 19L/R expect RADAR vectors for visual approach prior to BLD VORTAC. Rwy 26L/R expect ILS approach procedure.

LANDING NORTH LAS VEGAS, HENDERSON EXECUTIVE, and BOULDER CITY MUNI: After SKEBR expect RADAR vectors to airport.

CLARR THREE ARRIVAL

LAS VEGAS, NEVADA