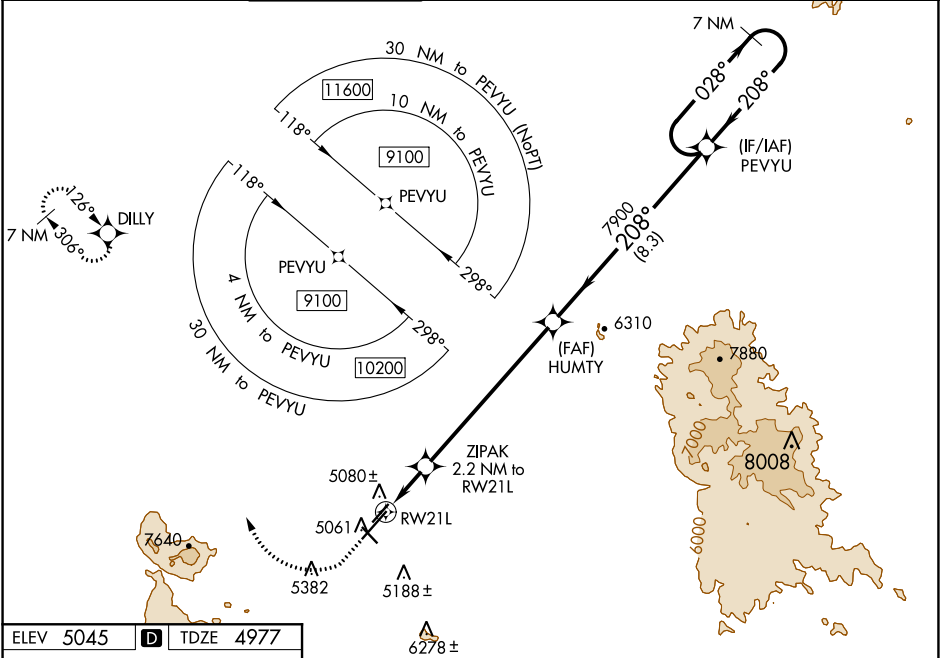


| | | | |
|--|------------------------|-----------------------------|---|
| WAAS CH 40002 W21A | APP CRS 208° | Rwy Idg TDZE Apt Elev | 7619 4977 5045 |
|--|------------------------|-----------------------------|---|

RNAV (GPS) RWY 21L
PRESCOTT RGNL - ERNEST A LOVE FIELD (PRC)

| | | | | | | | | | |
|---|-----------------------------------|--|--|------------------|--------------------|---|------------------|--|--|
| RNP APCH. | | | | | | MALSR | | MISSED APPROACH: Climb to 5500 then climbing right turn to 9100 direct DILLY and hold, continue climb-in-hold to 9100. | |
| <div><div><div>▼</div><div>▲</div></div><div>For uncompensated Baro-VNAV systems, LNAV/VNAV NA below -11°C or above 47°C. For inoperative MALSR increase LPV visibility all Cats to 1 mile. Circling Rwy 3L, 12, 30 NA at night. # Missed approach requires a minimum climb of 345 feet per NM to 7300.</div></div> | | | | | | <div><div><div>AS</div><div>⏏</div></div></div> | | | |
| ATIS 127.2 | PHOENIX APP CON 133.575 281.55 | | PRESCOTT TOWER ★ 125.3 (CTAF) 257.9 | GND CON 121.7 | CLNC DEL 119.25 | 128.75 (12-30) 125.3 (CTAF) (3R-21L) | UNICOM 122.95 | | |



| | | |
|-----------------------|---|---|
| ELEV 5045 | D | TDZE 4977 |
| 5500 9100 DILLY | | ZIPAK 2.2 NM to RWY 21L |
| *LNAV only. | | HUMTY 7900 |
| *1.5 NM to RWY 21L | | PEVYU 7900 |
| RWY 21L | | 7900 |
| 1.5 0.7 6.9 NM 8.3 NM | | GP 3.00° TCH 55 |
| CATEGORY | | A B C D |
| LPV DA | | # 5177-½ 200 (200-½) |
| LPV DA | | 5277-½ 300 (300-½) |
| LNAV/VNAV DA | | 5391-¾ 414 (400-¾) |
| LNAV MDA | | 5480-½ 503 (500-½) 5480-1 503 (500-1) |
| CIRCLING | | 5520-1 475 (500-1) 5760-1 715 (800-1) 6080-3 1035 (1100-3) 6680-3 1635 (1700-3) |