

YUMA, ARIZONA

18144

VOR RWY 17

VORTAC BZA 116.8 Chan 115	APCH CRS 167°	Rwy Idg TDZE Arpt Elev 5710 197 213
---	-------------------------	---

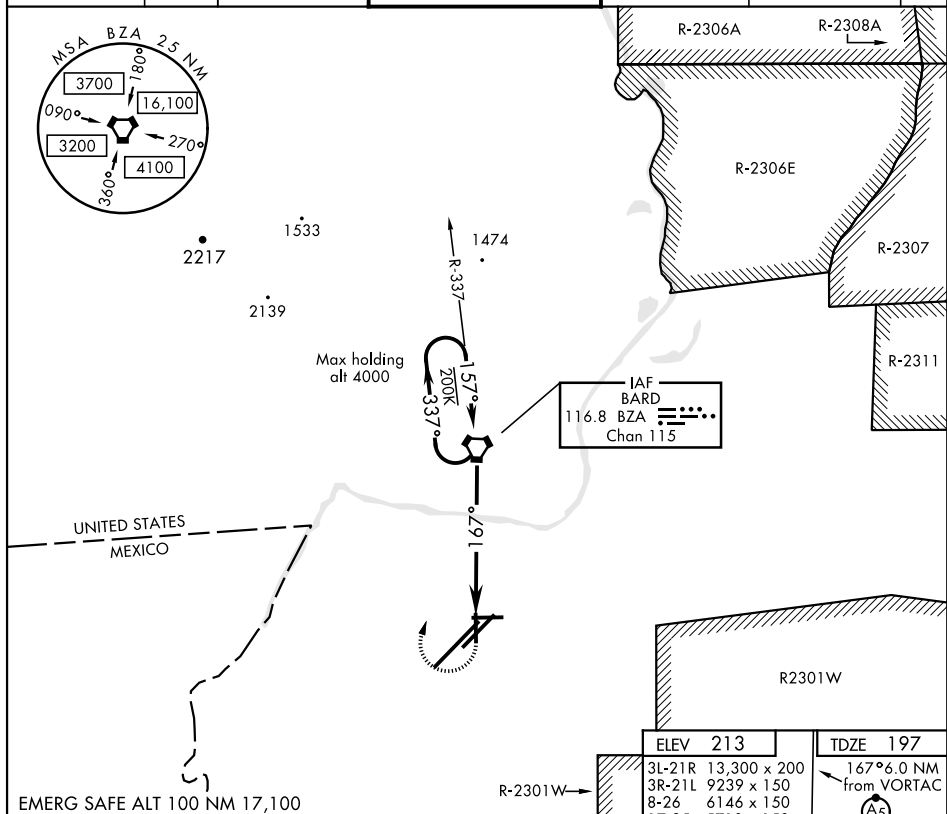
AL-511 [USN]

YUMA MCAS/YUMA INTL (KNYL)



MISSED APPROACH: Climb to 1100, then climbing right turn to 2500 direct BZA VORTAC and hold.

ATIS★ 118.8 273.5	ASOS 256.4	YUMA APP CON 124.7 371.975	YUMA TOWER★ 119.3 (CTAF) 0 377.075	GND CON 121.9 314.0	CLNC DEL 118.0 336.4	ASR/ PAR
-----------------------------	----------------------	--------------------------------------	---	-------------------------------	--------------------------------	-------------



EMERG SAFE ALT 100 NM 17,100			
<div> <div> <div>1100</div> <div>2500</div> <div>BZA</div> </div> <div> <div>337°</div> <div>157°</div> <div>167°</div> </div> <div> <div>2500</div> <div>2200</div> <div>3.08°</div> <div>TCH 40</div> </div> </div>			
CATEGORY	A	B	C
S-17	660-1	463 (500-1)	NA
CIRCLING	680-1 467 (500-1)	700-1 487 (500-1)	NA

YUMA, ARIZONA

32°39'N-114°36'W

YUMA MCAS/YUMA INTL (KNYL)

Amtd 3 24MAY18

VOR RWY 17

SW-4, 03 DEC 2020 to 31 DEC 2020