

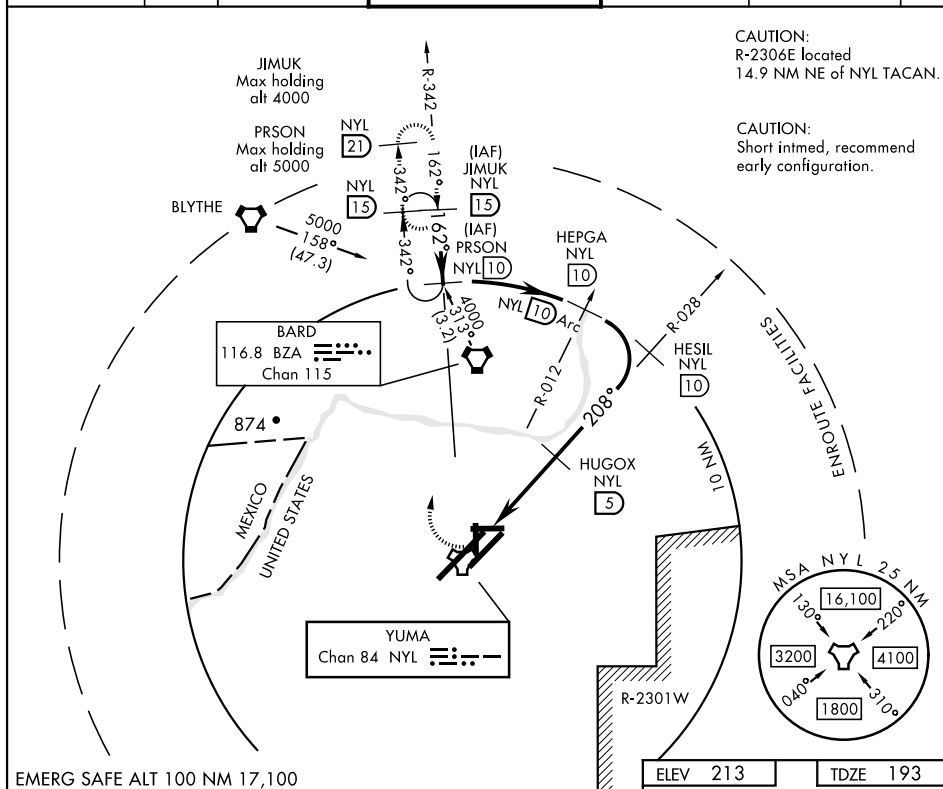
TACAN RWY 21R

TACAN NYL Chan 84	APCH CRS 208°	Rwy Idg 13,300 TDZE 193 Arpt Elev 213
----------------------	------------------	---

AL-511 [USN]

YUMA MCAS/YUMA INTL (KNYL)

V * When ALS inop, increase CAT AB vis to 1 mile, CAT CD vis to 1 1/2 miles.		MALSR 	MISSED APPROACH: Climbing right turn to 4000 intercept NYL TACAN R-342 to JIMUK and hold, continue climb-in-hold to 4000.		
ATIS★ 118.8 273.5	ASOS 256.4	YUMA APP CON 124.7 371.975	YUMA TOWER★ 119.3 (CTAF) 0 377.075	GND CON 121.9 314.0	CLNC DEL 118.0 336.4
ASR/ PAR					



4000 		JIMUK NYL 15	PRSON R-342 10		JIMUK R-342 15	208° to TACAN	
TACAN		HUGOX 5	HESIL R-028 10		HEPGA R-012 10	4000	
HOBMA 1.6		2.4	2200		2700	4000	
3.4 NM		208°	Arc 10		3.12°	TCH 50	
CATEGORY	A		B		C		D
S-21R*	640-1/2 447 (500-1/2)		640-7/8 447 (500-7/8)		800-1/2 587 (600-1/2)		800-2 587 (600-2)
CIRCLING	680-1 467 (500-1)		700-1 487 (500-1)		800-1/2 587 (600-1/2)		800-2 587 (600-2)

YUMA, ARIZONA

32°39'N-114°36'W

YUMA MCAS/YUMA INTL (KNYL)

Amdt 5 20JUN19

TACAN RWY 21R