

18144

CARGO NINE DEPARTURE (CARGO9•CARGO)

YUMA MCAS/YUMA INTL (KNYL)

YUMA, ARIZONA

ATIS ★
 118.8 273.5
 CLNC DEL
 118.0 336.4
 GND CON
 121.9 314.0
 YUMA TOWER ★
 119.3 377.075
 YUMA DEP CON
 125.55 282.325
 ASOS
 256.4

SHL-511 [USN]

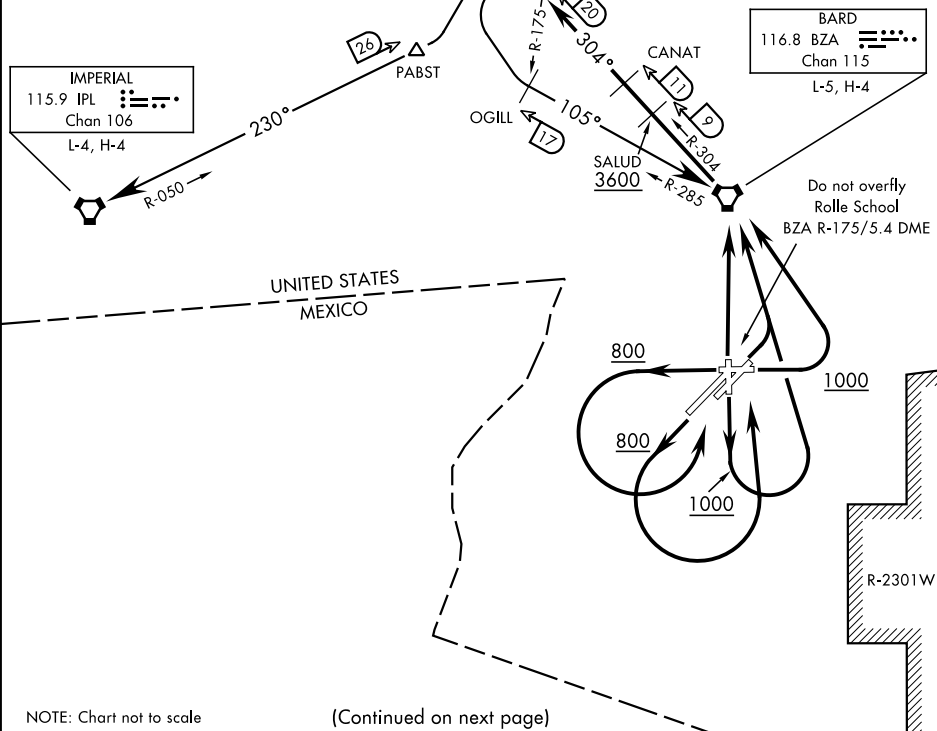
Rwy	Knots	60	120	180	240	300	360
3L/R	V/V(fpm)	225	450	675	900	1125	1350
26	V/V(fpm)	210	420	630	840	1050	1260
35	V/V(fpm)	241	482	723	964	1205	1446

ATC Climb Rate to 3600

BLYTHE
 117.4 BLH
 Chan 121
 L-4-5, H-4

This departure will be filed/assigned
 for aircraft not carrying external ordnance
 when radar services are not available.

Rwy 8: Do not exceed 270 KIAS until 1000
 Rwy 35: Cross BZA VORTAC at or below 14,000
 Max 300 KIAS until SALUD



NOTE: Chart not to scale

(Continued on next page)

CARGO NINE DEPARTURE (CARGO9•CARGO)

YUMA, ARIZONA

Orig 24MAY18

YUMA MCAS/YUMA INTL (KNYL)

SW-4, 03 DEC 2020 to 31 DEC 2020