
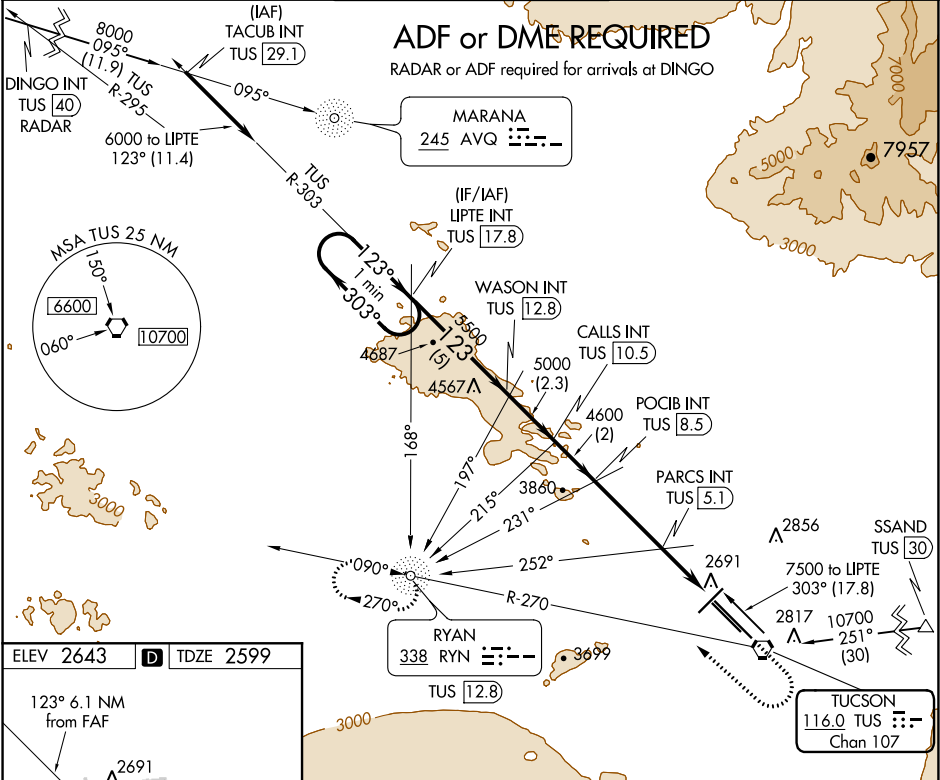


VORTAC TUS 116.0 Chan 107	APP CRS 123°	Rwy ldg TDZE 2599 Apt Elev 2643
---	------------------------	---

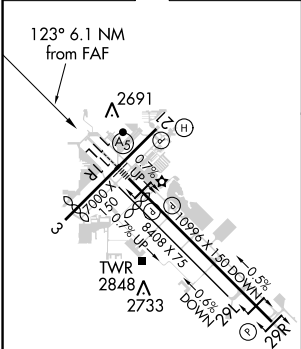
VOR or TACAN RWY 11L
TUCSON INTL (TUS)

A ADF or DME required. For inoperative ALS, increase Cat E visibility to 1¼ SM.	MALSR 	MISSED APPROACH: Climb to 4000 then climbing right turn to 6000 (Cat. E 8000) on heading 300° and TUS VORTAC R-270 to RYN NDB/TUS 12.8 DME and hold.
--	--	--

ATIS 123.8 279.65	TUCSON APP CON 119.4 318.1	TUCSON TOWER 118.3 257.8	GND CON 124.4 348.6	CLNC DEL 126.65 326.2
-----------------------------	--------------------------------------	------------------------------------	-------------------------------	---------------------------------



ELEV 2643	D	TDZE 2599
-----------	----------	-----------



HIRL Rwy 11L-29R MRL Rwy 3-21 and 11R-29L REIL Rwy 21, 29L and 29R					
FAF to MAP 6.1 NM					
Knots	60	90	120	150	180
Min:Sec	6:06	4:04	3:03	2:26	2:02

One Minute Holding Pattern	LIPTE INT TUS 17.8	WASON INT TUS 12.8	CALLS INT TUS 10.5	POCIB INT TUS 8.5	PARCS INT TUS 5.1	TUS 2.4	RYN
6000	303°	123°	5500	5000	4600	3480	
VGSI and descent angles not coincident (VGSI Angle 3.00/TCH 73).							
5 NM 2.3 NM 2 NM 3.4 NM 1.5 NM 1.2							
CATEGORY	A	B	C	D	E		
S-11L	3020/24	421 (500-½)	3020/40	421 (500-¾)			
CIRCLING	3160-1	517 (500-1)	3220-1½ 577 (600-1½)	3220-2 577 (600-2)	3800-3 1157 (1200-3)		

SW-4, 03 DEC 2020 to 31 DEC 2020

SW-4, 03 DEC 2020 to 31 DEC 2020