

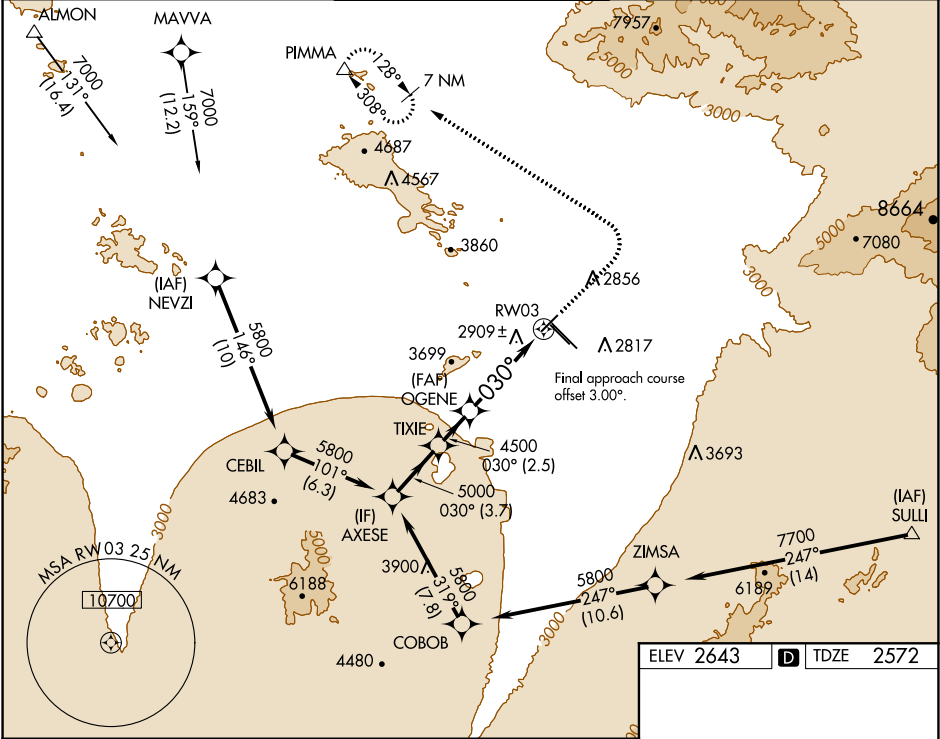
APP CRS	Rwy Idg	6150
030°	TDZE	2572
	Apt Elev	2643

RNAV (GPS) RWY 3

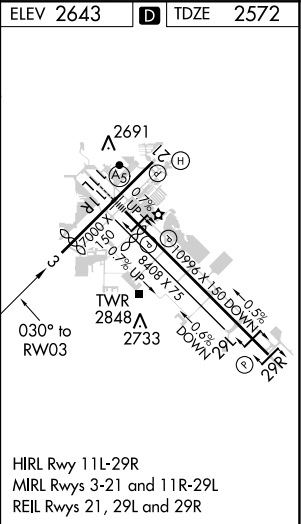
TUCSON INTL (TUS)

▼ For uncompensated Baro-VNAV systems, LNAV/VNAV NA below -20°C (-4°F) or above 27°C (80°F). DME/DME RNP-0.3 NA. Helicopter visibility reduction below ¾ SM NA.	MISSED APPROACH: Climb to 3500 then climbing left turn to 6500 direct PIMMA and hold.
---	---

ATIS 123.8 279.65	TUCSON APP CON 119.4 318.1	TUCSON TOWER 118.3 257.8	GND CON 124.4 348.6	CLNC DEL 126.65 326.2
----------------------	-------------------------------	-----------------------------	------------------------	--------------------------



Procedure Turn NA	AXESE	TIXIE	OGENE	RW03
5800	5000	4500	4500	3500
GP 3.00° TCH 50	030°			
	3.7 NM	2.5 NM	4.1 NM	1.8 NM
CATEGORY	A	B	C	D
LNAV/VNAV	DA	3284-2½	712 (700-2½)	
LNAV MDA	3180-1	608 (600-1)	3180-1¾	608 (600-1¾)
CIRCLING	3180-1 537 (600-1)	3220-1 577 (600-1)	3220-1¾ 577 (600-1¾)	3220-2 577 (600-2)



SW-4, 03 DEC 2020 to 31 DEC 2020

SW-4, 03 DEC 2020 to 31 DEC 2020