

TUCSON, ARIZONA

RNAV (GPS) RWY 30

WAAS CH 91450 W30A	APCH CRS 305°	Rwy Idg 13,643 TDZE 2704 Arpt Elev 2704
--------------------------	------------------	-----------------------------------------------

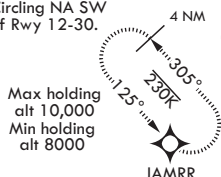
AL-429 (USAF)

DAVIS MONTHAN AFB (KDMA)

	<p>* When ALS inop, increase vis to 1 3/8 miles. ** When ALS inop, increase RVR to 60, vis to 1 1/8 miles. *** When ALS inop, increase CAT AB RVR to 55, vis to 1 mile; CAT CDE vis to 1 5/8 miles.</p>	<p>ALS-F-1</p>	<p>MISSED APPROACH: Climb to 8000 direct JAMMR and hold, continue climb-in-hold to 8000.</p>

ATIS ★ 270.1	TUCSON APP CON/DEP CON 119.4 269.55	TOWER 118.85 253.5	GND CON 121.8 275.8	CLNC DEL 121.8 275.8
-----------------	----------------------------------------	-----------------------	------------------------	-------------------------

**** Circling NA SW
of Rwy 12-30.

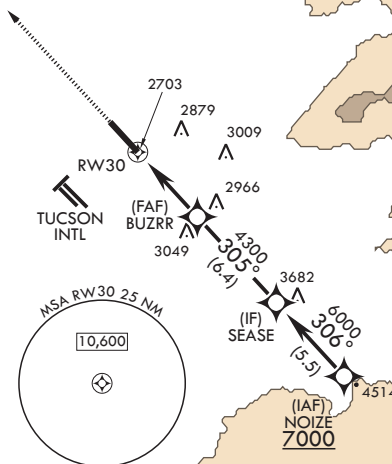


RNP APCH

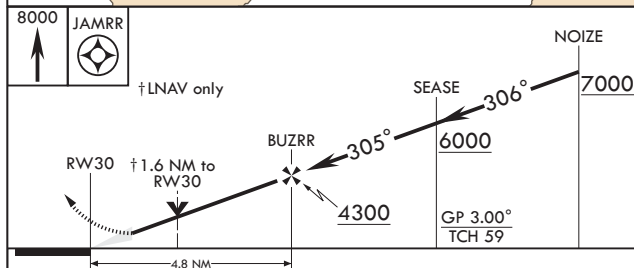
Average Cold Temperature
based on Standard -30.00
°C ISA deviation.


For uncompensated
Baro-VNAV systems,
LNAV/VNAV NA below
5°C or above 54°C.

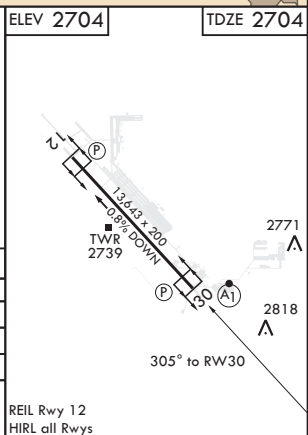
CAUTION: Para Jump operations in vicinity of Pinal Airport.



EMERG SAFE ALT 100 NM 17,200



CATEGORY	A	B	C	D	E
LPV DA*	3168/50		464	(500-1)	
LNAV/VNAV DA**	3109/40		405	(500-¾)	
LNAV MDA***	3280/24 576 (600-½)		3280-1¼	576	(600-1¼)
 CIRCLING****	3280-1 576 (600-1)		3320-1¼ 616 (700-1¾)	3320-2 616 (700-2)	3440-2½ 736 (800-2½)



TUCSON, ARIZONA

32°10'N - 110°53'W

DAVIS MONTHAN AFB (KDMA)

RNAV (GPS) RWY 30

Orig 10SEP20

REIL Rwy 12
HIRE all Rwy

SW-4, 03 DEC 2020 to 31 DEC 2020

SW-4, 03 DEC 2020 to 31 DEC 2020