

ILS or LOC Y RWY 12

LOC I-AFB <u>109.3</u>	APCH CRS 125°	Rwy Idg 13,643 TDZE 2615 Arpt Elev 2704
----------------------------------	-------------------------	--

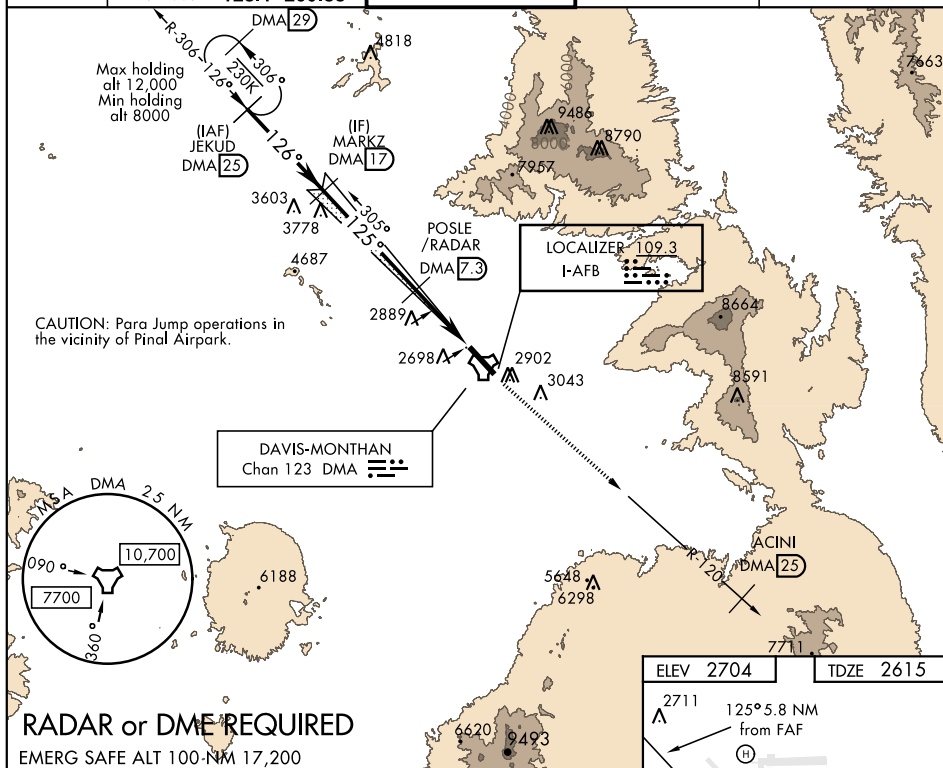
AL-429 [USAF]

DAVIS-MONTHAN AFB (KDMA)

* Circling not authorized S of Rwy 12-30.

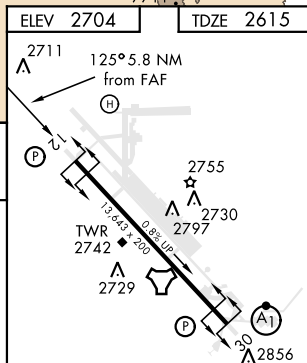
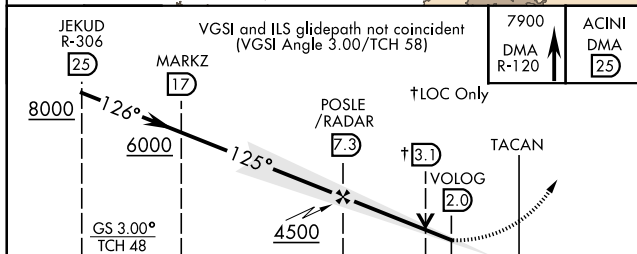
MISSED APPROACH: Climbing to 7900 intercept DMA TACAN R-120 to ACINI. Expect RADAR vectors.

ATIS★	TUCSON APP CON		DAVIS-MONTHAN TOWER		GND CON		CLNC DEL	
270.1	066°-274°	119.4 318.1						
	275°-065°	125.1 269.55	118.85	253.5	121.8	275.8	121.8	275.8



RADAR or DME REQUIRED

EMERG SAFE ALT 100-NM 17,200



			5.3 NM		5 NM	
CATEGORY	A	B	C	D	E	
S-ILS 12	2865/40 250 (200-¾)					
S-LOC 12	3160/55 545 (500-1)		3160-15 545 (500-1½)			
CIRCLING*	3220-1 516 (600-1)	3240-1 536 (600-1)	3320-1½ 616 (700-1¾)	3360-2 656 (700-2)	3440-2½ 736(800-2½)	

REIL Rwy 12						
HIRL Rwy 12-30						
FAF to MAP 5.3 NM						
Knots	60	90	120	150	180	
Min:Sec	5:18	3:32	2:39	2:07	1:46	

TUCSON, ARIZONA

32°10'N-110°53'W

DAVIS-MONTHAN AFB (KDMA)

Amdt 1 28MAR19

ILS or LOC Y RWY 12

SW-4, 03 DEC 2020 to 31 DEC 2020

SW-4, 03 DEC 2020 to 31 DEC 2020