
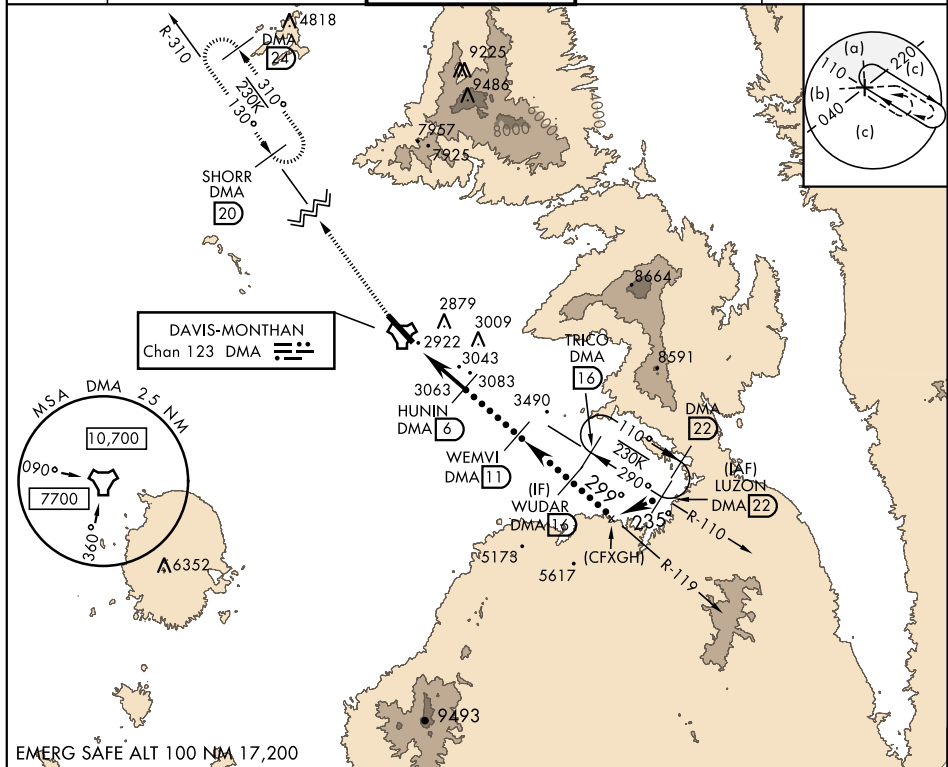


HI-TACAN Z RWY 30

TACAN DMA Chan 123	APCH CRS 299°	Rwy Idg 13,643 TDZE 2704 Arpt Elev 2704	JAL-429 [USAF]	DAVIS-MONTHAN AFB (KDMA)	
▼ * When ALS inop, increase vis to 1 1/4 miles. ** Circling not authorized S of Rwy 12-30.			ALSF-1 	MISSED APPROACH: Climb to 7200, intercept DMA TACAN R-310 to SHORR and hold.	
ATIS ★ 270.1	TUCSON APP CON 066°-274° 119.4 318.1 275°-065° 125.1 269.55		DAVIS-MONTHAN TOWER 118.85 253.5		GND CON 121.8 275.8
			CLNC DEL 121.8 275.8		



CATEGORY	C	D	E
S-30 *	3340-1 $\frac{3}{8}$	636 (700-1 $\frac{3}{8}$)	
C CIRCLING **	3340-1 $\frac{3}{8}$ 636 (700-1 $\frac{3}{8}$)	3360-2 656 (700-2)	3440-2 $\frac{1}{2}$ 736 (800-2 $\frac{1}{2}$)

TUCSON, ARIZONA
Amdt 7 30MAR17

32°10'N-110°53'W

DAVIS-MONTHAN AFB (KDMA)

HI-TACAN Z RWY 30