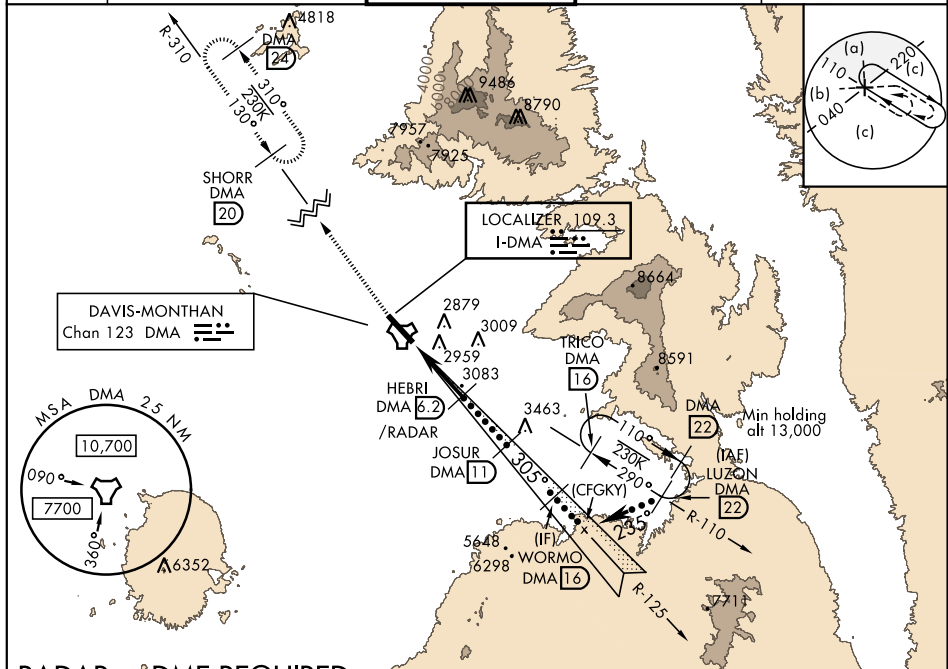


HI-ILS or LOC Z RWY 30

LOC I-DMA 109.3	APCH CRS 305°	Rwy ldg 13,643 TDZE 2704 Arpt Elev 2704	JAL-429 [USAF]	DAVIS-MONTHAN AFB (KDMA)
---------------------------	-------------------------	--	----------------	--------------------------

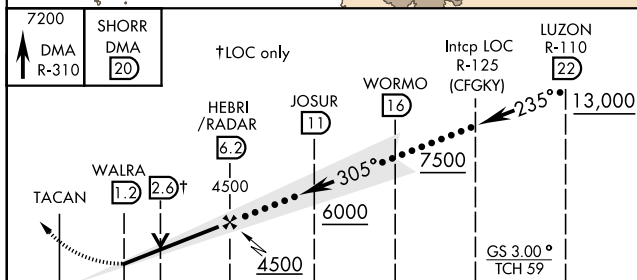
<p>★ When ALS inop, increase vis to 1 3/4 miles.</p> <p>★★ Circling not authorized S of Rwy 12-30.</p>	<p>ALSF-1</p> <p>(A1)</p>	<p>MISSED APPROACH: Climb to 7200, intercept DMA TACAN R-310 to SHORR and hold.</p>
--	---------------------------	---

<p>ATIS ★</p> <p>270.1</p>	<p>TUCSON APP CON</p> <p>066°-274° 119.4 318.1</p> <p>275°-065° 125.1 269.55</p>	<p>DAVIS-MONTHAN TOWER</p> <p>118.85 253.5</p>	<p>GND CON</p> <p>121.8 275.8</p>	<p>CLNC DEL</p> <p>121.8 275.8</p>
-----------------------------------	--	---	--	---



RADAR or DME REQUIRED

EMERG SAFE ALT 100 NM 17,200



CATEGORY	C	D	E
S-ILS 30	2954/40	250	(300-34)
S-LOC 30 *	3340-1 3/4	636	(700-1 3/4)
CIRCLING **	3340-1 3/4 636 (700-1 3/4)	3360-2 656 (700-2)	3440-2 1/2 736 (800-2 1/2)

TUCSON, ARIZONA

32°10'N-110°53'W

DAVIS-MONTHAN AFB (KDMA)

Amdt 8 28MAR19

HI-ILS or LOC Z RWY 30