

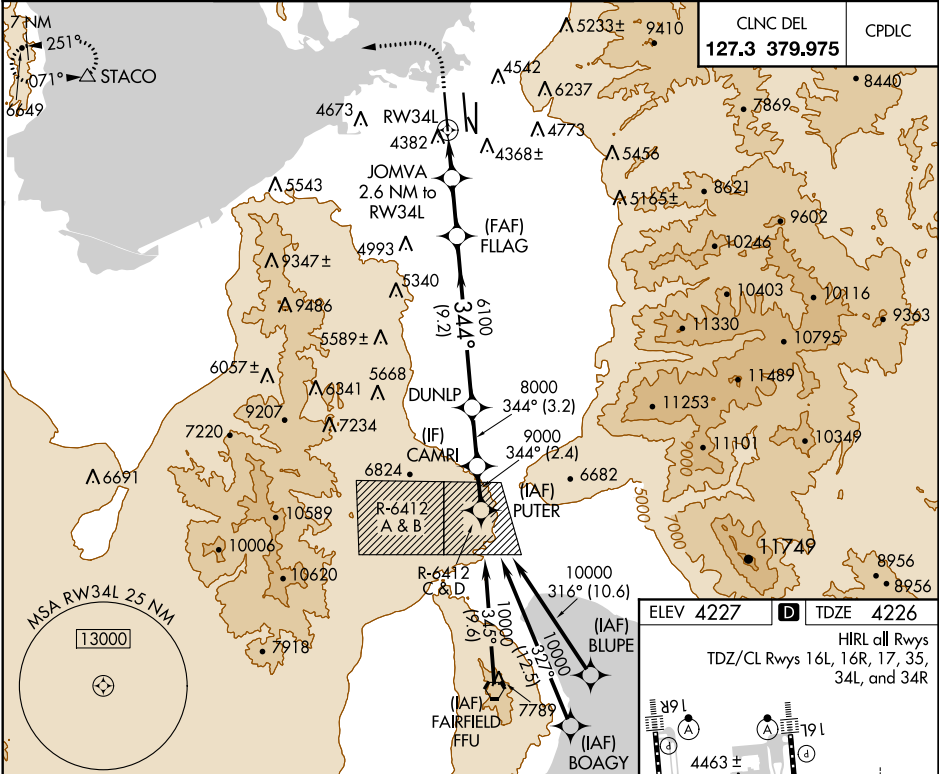
WAAS CH 70432 W34B	APP CRS 344°	Rwy Idg TDZE Apt Elev	12000 4226 4227
--	------------------------	-----------------------------	--

RNAV (GPS) RWY 34L

SALT LAKE CITY INTL (SLC)

▼ For uncompensated Baro-VNAV systems, LNAV/VNAV NA below -17°C (2°F) or above 49°C (121°F). Simultaneous approach authorized. DME/DME RNP-0.3 NA. Use of FD or AP providing RNAV track guidance required during simultaneous operations. LNAV procedure NA during simultaneous operations. For inop ALS, increase LPV Cat E visibility to RVR 4000, LNAV/VNAV Cat E visibility to RVR 6000, LNAV Cat E visibility to 1 1/4 SM.	ALSIF-2 	MISSED APPROACH: Climb to 4800 then climbing left turn to 8100 direct STACO and hold.
--	-------------	---

D-ATIS 124.75 125.625	SALT LAKE CITY APP CON 125.7 284.6	SALT LAKE CITY TOWER 119.05 257.8 118.3 257.8 132.65 336.4 (Rwy 16L-34R) (Rwys 14-32, 17-35) (Rwy 16R-34L)			GND CON 121.9 348.6 123.775 348.6 (Rwys 14-32, 17-35) (Rwys 16L-34R, 16R-34L)
---	---	---	--	--	--



4800	8100	STACO △	VGSI and RNAV glidepath not coincident (VGSI Angle 3.00/TCH 73).			CAMRI	PUTER
*LNAV only.							
JOMVA 2.6 NM to RW34L							
*1.1 NM to RW34L							
RW34L							
1.1 NM 1.5 NM 3.1 NM 9.2 NM 3.2 NM 2.4 NM							
5100* 6100 8000 9000 10000							
GP 3.00° TCH 55							
CATEGORY	A		B		C	D	E
LPV DA			4426/18		200 (200-½)		
LNAV/VNAV DA			4577/30		351 (400-⅝)		
LNAV MDA	4660/24		434 (500-½)		4660/40		434 (500-¾)

