

WAAS CH 82338 W17A	APP CRS 169°	Rwy Idg 9597 TDZE 4219 Apt Elev 4227
--	------------------------	---

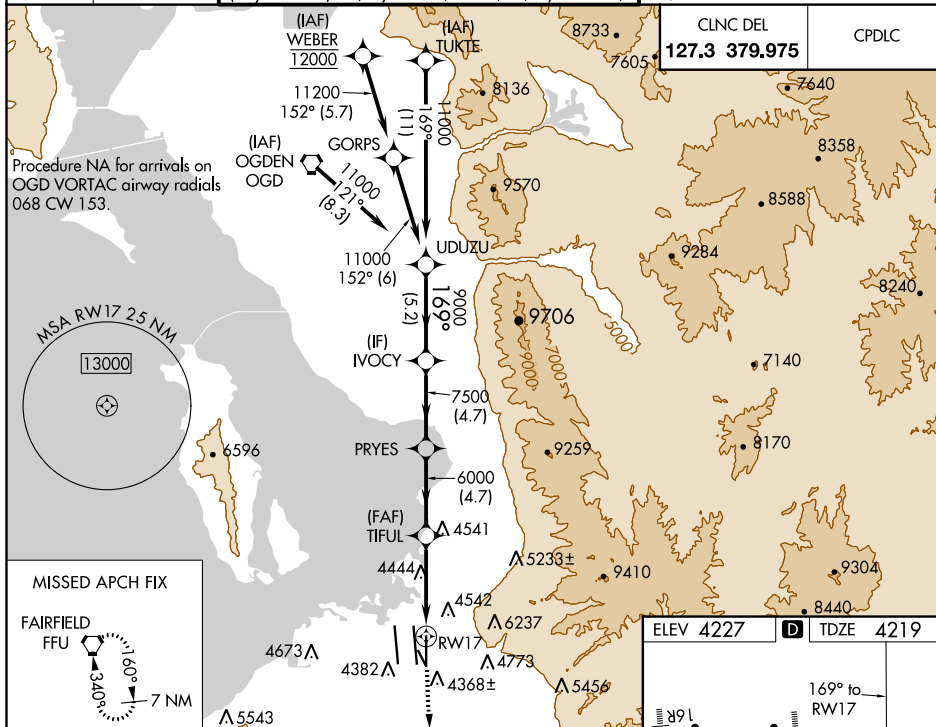
RNAV (GPS) RWY 17
SALT LAKE CITY INTL (SLC)

▼ For uncompensated Baro-VNAV systems, LNAV/VNAV NA below -14°C (7°F) or above 49°C (121°F). DME/DME RNP-0.3 NA. For inop ALS, increase LPV Cat E visibility to RVR 4000, LNAV/VNAV Cat E visibility to RVR 6000, and LNAV Cat C/D/E visibility to 1% SM. Simultaneous approach authorized. LNAV procedure NA during simultaneous operations. Use of FD or AP providing RNAV track guidance required during simultaneous operations.

MALSR

MISSED APPROACH:
Climb to 4700 then
climbing left turn to
10000 direct FFU
VORTAC and hold.

D-ATIS	SALT LAKE CITY	SALT LAKE CITY TOWER			GND CON		
124.75	APP CON	119.05 257.8	118.3 257.8	132.65 336.4	121.9 348.6	123.775 348.6	
125.625	125.7 284.6	(Rwy 16L-34R)	(Rwys 14-32, 17-35)	(Rwy 16R-34L)	(Rwys 14-32, 17-35)	(Rwys 16L-34R, 16R-34L)	



VGS1 and RNAV glidepath not coincident
(VGS1 Angle 3.00/TCH 73).

UDUZU

IVOCY

PRYES

TIFUL

FFU

11000

9000

7500

6000

4700

10000

GP 3.00°
TCH 55

169°

5.2 NM

4.7 NM

4.7 NM

4.1 NM

1.3

*LNAV only

*1.3 NM to RW17

RW17

CATEGORY	A	B	C	D	E
LPV DA	4419/18 200 (200-½)				
LNAV/VNAV DA	4571/30 352 (400-¾)				
LNAV MDA	4700/24 481 (500-½)	4700/50 481 (500-1)			

