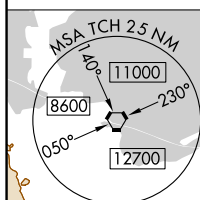
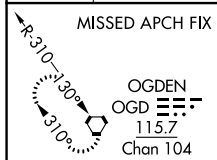


LDA RWY 35
SALT LAKE CITY INTL (SLC)

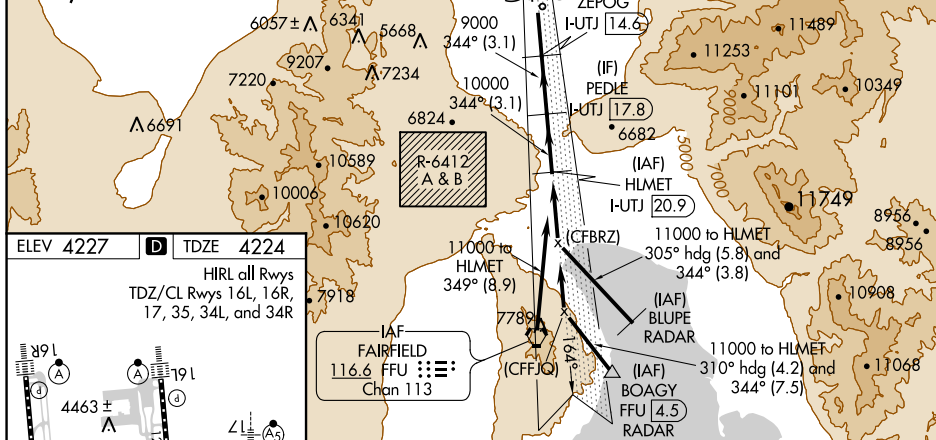
MALSR

MISSED APPROACH: Climb to 4800 then climbing left turn to 9000 direct TCH VORTAC and on TCH VORTAC R-331 to OGD VORTAC and hold.

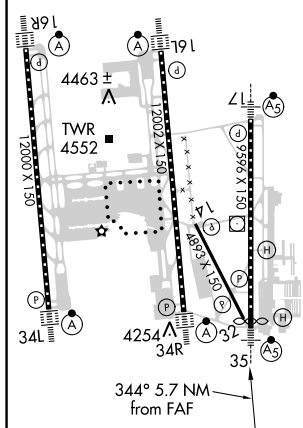
CLNC DEL	CPDLC
127.3 379.975	



LDA/GLIDE SLOPE



ELEV 4227	D	TDZE 4224
HIRL all Rwys TDZ/CL Rwys 16L, 16R, 17, 35, 34L, and 34R		



4800 ↑	9000 ↘	TCH 	TCH R-331	OGD 	VGSI and LDA glidepath not coincident (VGSI Angle 3.00/TCH 74).				
*LDA only		I-UTJ DME ANT.	WHEEL I-UTJ 1.8	KERNN I-UTJ 5.5	ZEPOG I-UTJ 14.6	PEDLE I-UTJ 17.8	HLMET I-UTJ 20.9		
FORXS I-UTJ 0.2		*I-UTJ 0.9	6100		344°		11000		
4900*		6100		9000		10000		GS 3.00° TCH 55	
1.1 NM		0.9 NM	3.7 NM		9.1 NM		3.1 NM		
CATEGORY	A		B		C	D	E		
S-LDA/GS 35			4474/24		250 (300-½)				
S-LDA 35	4660/24		436 (500-½)		4660/40		436 (500-¾)		