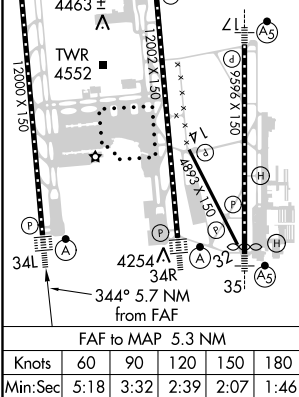
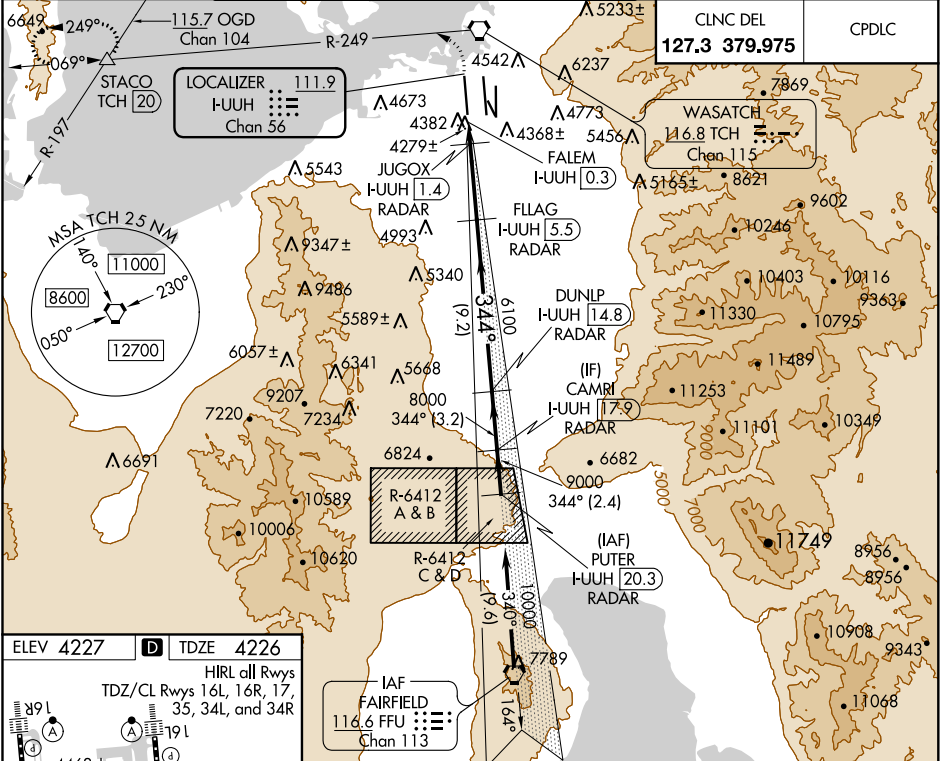


LOC/DME I-UUHH	APP CRS	Rwy Idg	12000
111.9	344°	TDZE	4226
Chan 56		Apt Elev	4227

ILS or LOC RWY 34L
SALT LAKE CITY INTL (SLC)

RADAR required for arrivals at PUTER. DME or RADAR required.		ALSIF-2	MISSED APPROACH: Climb to 4800 then climbing left turn to 8100 on TCH VORTAC R-249 to STACO INT/TCH 20 DME and hold.
Simultaneous approach authorized.			

D-ATIS	SALT LAKE CITY APP CON	SALT LAKE CITY TOWER			GND CON	
124.75		119.05	257.8	118.3 257.8	121.9 348.6	123.775 348.6
125.625	125.7 284.6	(Rwy 16L-34R)	(Rwys 14-32, 17-35)	(Rwy 16R-34L)	(Rwys 14-32, 17-35)	(Rwys 16L-34R, 16R-34L)



4800 ↑	8100 TCH R-249	STACO △	VGSI and ILS glidepath not coincident (VGSI Angle 3.00/TCH 73).			PUTER I-UUH [20.3]
*LOC only			FLIAG I-UUH [5.5] RADAR	DUNLP I-UUH [14.8] RADAR	CAMRI I-UUH [17.9] RADAR	
JUGOX I-UUH [1.4] RADAR			6100	344°	10000	
FALEM I-UUH [0.3]			4780*	8000	9000	
0.5			1.1 NM	4.1 NM	9.2 NM	
CATEGORY			A	B	C	D
S-ILS 34L			4426/18 200 (200-½)			
S-LOC 34L			4560/24 334 (400-½)		4560/26 334 (400-½)	

SW-4, 03 DEC 2020 to 31 DEC 2020

SW-4, 03 DEC 2020 to 31 DEC 2020