

LOC/DME I-BNT	APP CRS	Rwy Idg	9597
111.5	169°	TDZE	4219
Chan 52		Apt Elev	4227

ILS or LOC RWY 17

SALT LAKE CITY INTL (SLC)

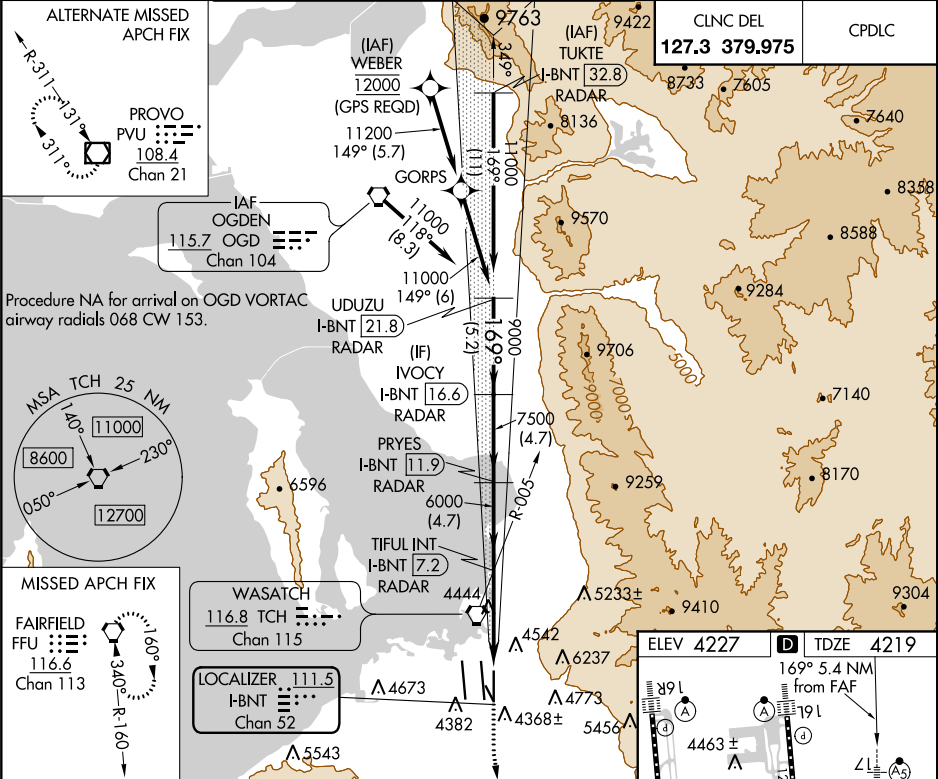
DME or RADAR required. Simultaneous approach authorized.
For inop ALS, increase S-ILS 17 Cat E visibility to RVR 4000,
increase S-LOC 17 Cat C/D/E visibility to 1 3/8 SM.

MALSR

A5

MISSED APPROACH: Climb to 5800
then climbing left turn to 10000 direct
FFU VORTAC and hold.

D-ATIS	SALT LAKE CITY APP CON	SALT LAKE CITY TOWER	GND CON
124.75		119.05 257.8 118.3 257.8 132.65 336.4	121.9 348.6 123.775 348.6
125.625	125.7 284.6	(Rwy 16L-34R) (Rwys 14-32, 17-35) (Rwy 16R-34L)	(Rwys 14-32, 17-35) (Rwys 16L-34R, 16R-34L)



UDUZU I-BNT <u>21.8</u> RADAR		VGSI and ILS glidepath not coincident (VGSI Angle 3.00/TCH 73). IVOCY I-BNT <u>16.6</u> RADAR		5800 ↑		10000 ↷		FFU ⬡	
11000		169°		9000		7500		6000	
GS 3.00° TCH 55		5.2 NM		4.7 NM		4.7 NM		4.1 NM	
CATEGORY		A		B		C		D	
S-ILS 17				4419/18		200 (200-½)			
S-LOC 17		4700/24		481 (500-½)		4700/50		481 (500-1)	

