

ILS or LOC RWY 16R  
SALT LAKE CITY INTL (SLC)

**MISSED APPROACH:** Climb to 4800 then climbing right turn to 8100 on heading 300° and on TCH VORTAC R-249 to STACO INT/TCH 20 DME and hold.

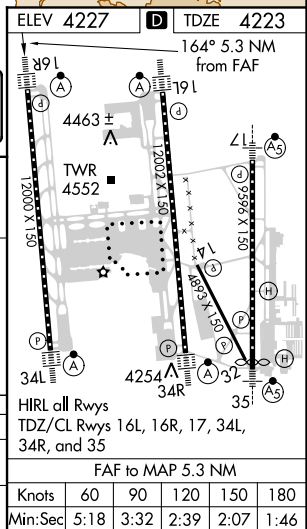
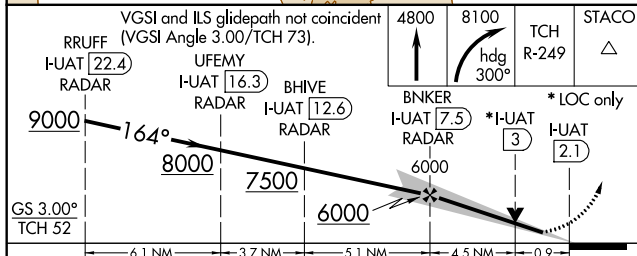
GND CON	
<b>121.9 348.6</b> (Rwys 14-32, 17-35)	<b>123.775 348.6</b> (Rwys 16L-34R, 16R-34L)

IAF OGDEN

344°

(IAF) FANDS

8136



FDZ/CL Rwy's 16L, 16R, 17, 34L, 34R, and 35					
FAF to MAP 5.3 NM					
Knots	60	90	120	150	180
Min:Sec	5:18	3:32	2:39	2:07	1:46