

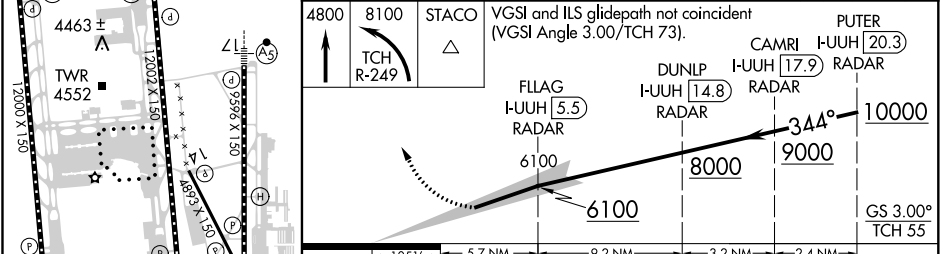
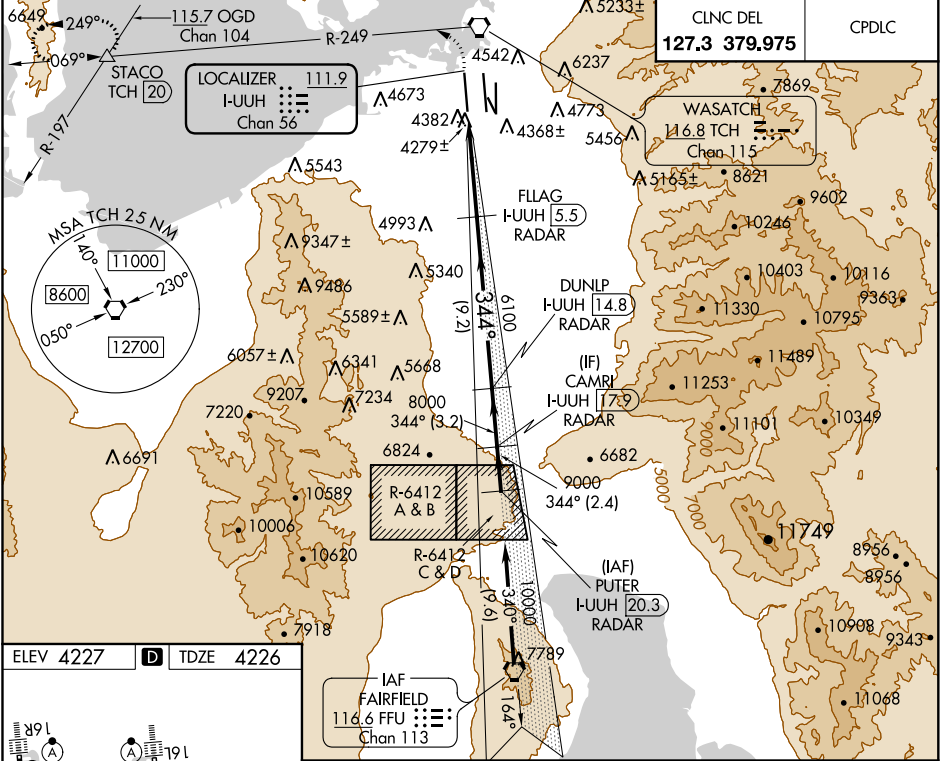
LOC/DME I-UUHH	APP CRS	Rwy Idg	12000
111.9	344°	TDZE	4226
Chan 56		Apt Elev	4227

ILS RWY 34L (SA CAT I)

SALT LAKE CITY INTL (SLC)

RADAR required for arrivals at PUTER. DME or RADAR required.		ALSIF-2	MISSED APPROACH: Climb to 4800 then climbing left turn to 8100 on TCH VORTAC R-249 to STACO INT/TCH 20 DME and hold.
Simultaneous approach authorized. Requires specific OPSPEC, MSPEC, or LOA approval and use of HUD to DH.			

D-ATIS	SALT LAKE CITY APP CON	SALT LAKE CITY TOWER		GND CON	
124.75		119.05 257.8	118.3 257.8	121.9 348.6	123.775 348.6
125.625	125.7 284.6	(Rwy 16L-34R)	(Rwys 14-32, 17-35)	(Rwys 14-32, 17-35)	(Rwys 16L-34R, 16R-34L)



CATEGORY		A	B	C	D
S-ILS 34L		RA 158/14 150 DA 4376			
SA CATEGORY I ILS - SPECIAL AIRCREW & AIRCRAFT CERTIFICATION REQUIRED					

SW-4, 03 DEC 2020 to 31 DEC 2020

SW-4, 03 DEC 2020 to 31 DEC 2020