

LOC/DME I-UT <b>111.9</b> Chan <b>56</b>	APP CRS <b>164°</b>	Rwy Idg <b>12000</b> TDZE <b>4223</b> Apt Elev <b>4227</b>
--	------------------------	--

ILS RWY 16R (SA CAT I)  
SALT LAKE CITY INTL (SLC)

DME or RADAR required.

**T** Simultaneous approach authorized.  
Requires specific OPSPEC, MSPEC, or LOA approval and use of HUD to DH.

ALSF-2

**MISSED APPROACH:** Climb to 4800 then climbing right turn to 8100 on heading 300° and on TCH VORTAC R-249 to STACO INT/TCH 20 DME and hold.

D-ATIS	SALT LAKE CITY	SALT LAKE CITY TOWER			GND CON		
124.75	APP CON	119.05 257.8	118.3 257.8	132.65 336.4	121.9 348.6	123.775 348.6	
125.625	125.7 284.6	(Rwy 16L-34R)	(Rwys 14-32, 17-35)	(Rwy 16R-34L)	(Rwys 14-32, 17-35)	(Rwys 16L-34R, 16R-34L)	

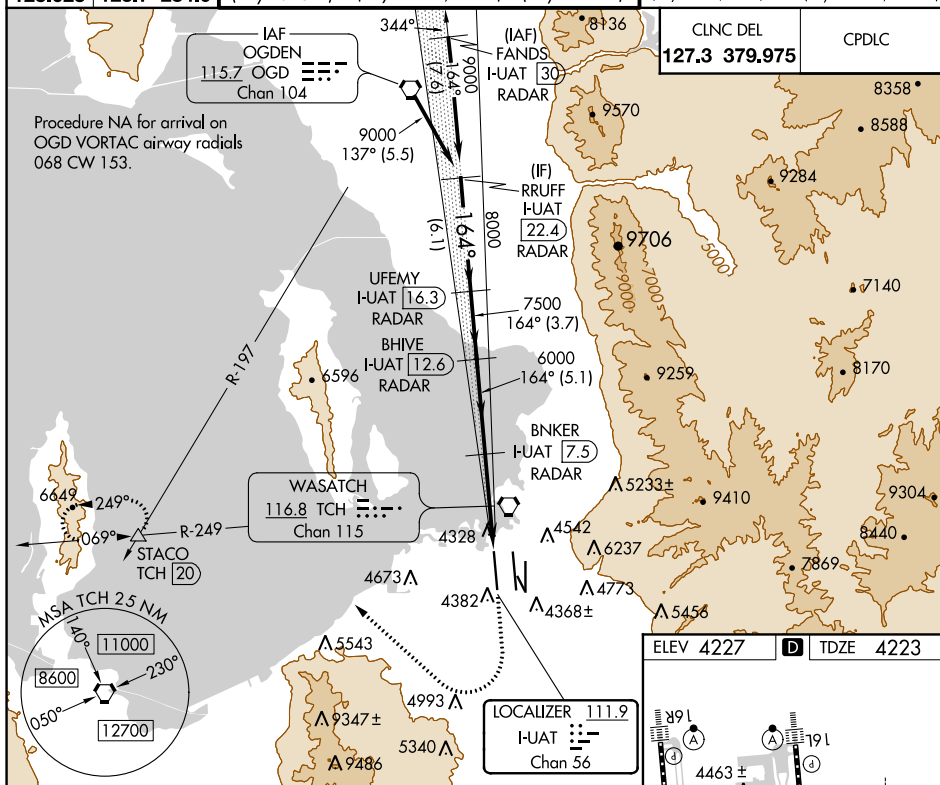


Diagram illustrating the SA Category I ILS - Special Aircrew & Aircraft Certification Required for Runway 157/14.

The diagram shows the approach path, including the glide path (GS 3.00°) and the transition height (TCH 52'). The approach is divided into segments with distances: 6.1 NM, 3.7 NM, 5.1 NM, 5.3 NM, and 1051 ft.

Key parameters and radar stations:

- RUUFF I-UAT 22.4
- UFMY I-UAT 16.3
- BHIVE I-UAT 12.6
- BNKER I-UAT 7.5
- STACO
- GS 3.00°
- TCH 52'
- Distances: 6.1 NM, 3.7 NM, 5.1 NM, 5.3 NM, 1051 ft
- Altitudes: 9000, 8000, 7500, 6000, 6000, 8100
- Angles: 164°, 300°
- Heading: hdg 300°
- Frequency: R-249

CATEGORY	A	B	C	D
S-ILS 16R				

RA 157/14 150 DA 4373

**SA CATEGORY I ILS - SPECIAL AIRCREW & AIRCRAFT CERTIFICATION REQUIRED**

