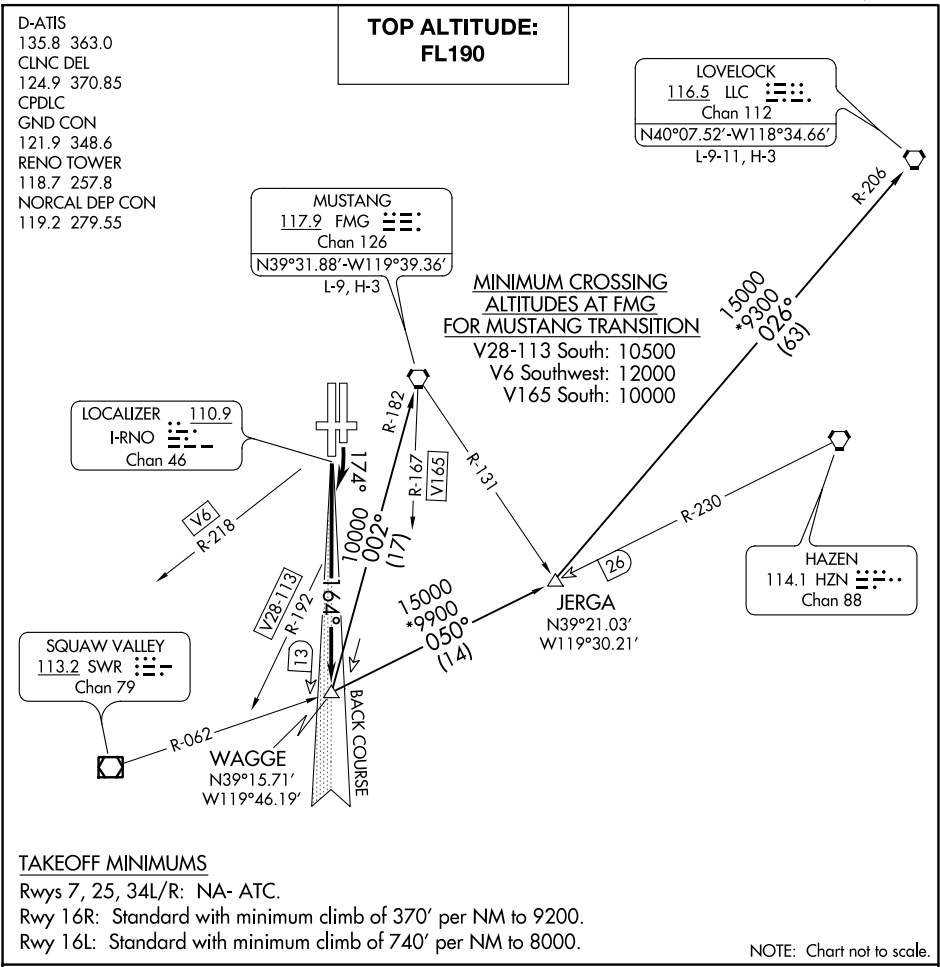


(WAGGE6.WAGGE) 18088
WAGGE SIX DEPARTURE

AL-346 (FAA)

RENO/TAHOE INTL (RNO)
RENO, NEVADA



TAKEOFF MINIMUMS
Rwys 7, 25, 34L/R: NA- ATC.
Rwy 16R: Standard with minimum climb of 370' per NM to 9200.
Rwy 16L: Standard with minimum climb of 740' per NM to 8000.

DEPARTURE ROUTE DESCRIPTION

TAKEOFF RUNWAY 16R: Climb on I-RNO south course to WAGGE INT, thence via (transition) or assigned route.

TAKEOFF RUNWAY 16L: Climbing right turn heading 174° to intercept I-RNO south course to WAGGE INT, thence via (transition) or assigned route.

All aircraft maintain FL190 or assigned altitude. Expect clearance to requested altitude 5 minutes after departure.

LOVELOCK TRANSITION (WAGGE6.LLC): From over WAGGE INT via HZN R-230 to JERGA INT then via LLC R-206 to LLC VORTAC.

MUSTANG TRANSITION (WAGGE6.FMG): From over WAGGE INT via FMG R-182 to FMG VORTAC.

WAGGE SIX DEPARTURE
(WAGGE6.WAGGE) 04FEB16

RENO, NEVADA
RENO/TAHOE INTL (RNO)

SW-4, 03 DEC 2020 to 31 DEC 2020

SW-4, 03 DEC 2020 to 31 DEC 2020