


APP CRS	Rwy Idg	9000
164°	TDZE	4415
	Apt Elev	4415

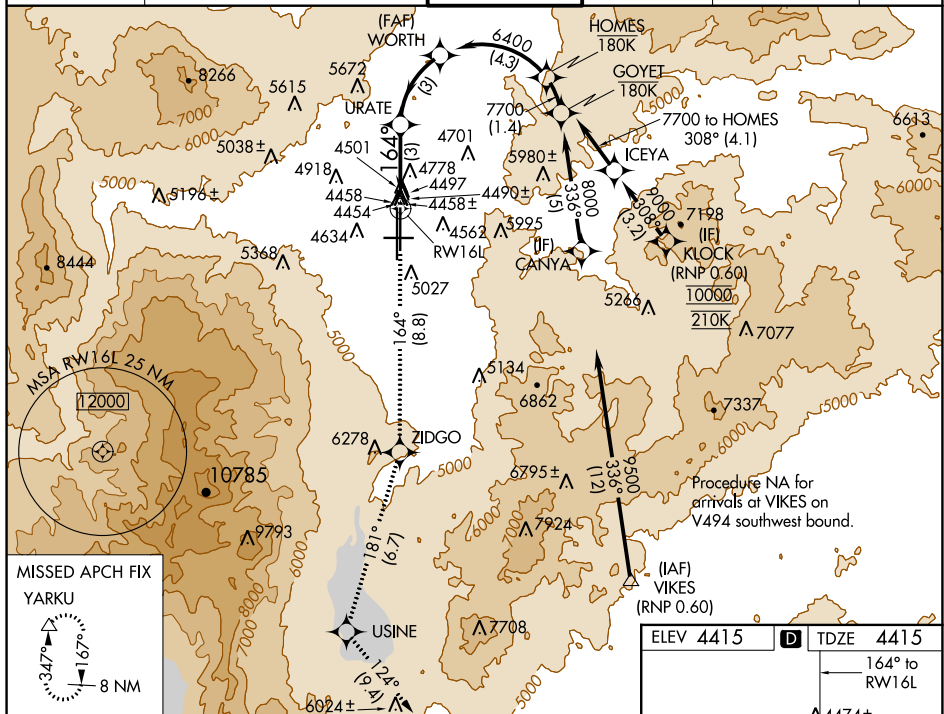
RNAV (RNP) Y RWY 16L
RENO/TAHOE INTL (RNO)

RNP AR APCH. RF required.	MISSED APPROACH: Climb to 13000 on track 164° to ZIDGO and on track 181° to USINE
------------------------------	---

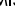
 For uncompensated Baro-VNAV systems, procedure NA below -14°C or above 44°C.

MISSED APPROACH: Climb to 13000 on track 164° to ZIDGO and on track 181° to USINE and on track 124° to YARKU and hold, continue climb-in-hold to 13000.
 * Missed approach requires minimum climb of 252 feet per NM to 7200.

D-ATIS	NORCAL APP CON				RENO TOWER		GND CON		CLNC DEL		CPDLC
135.8 363.0	119.2	279.55	126.3	353.9	118.7	257.8	121.9	348.6	124.9	370.85	



MISSED APCH FIX
YARKU

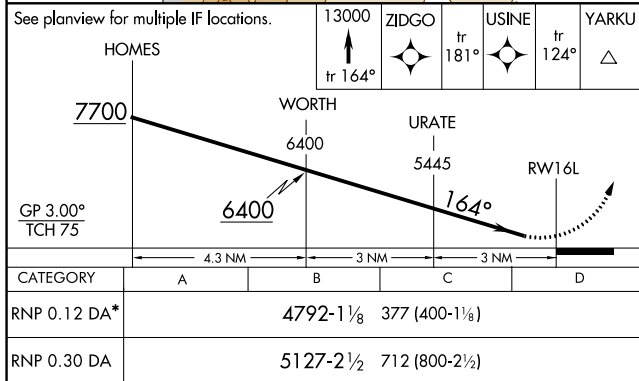


347°

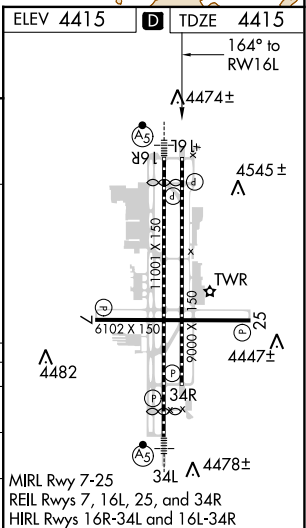
167°

8 NM

See planview for multiple IF locations.



AUTHORIZATION REQUIRED



RENO, NEVADA
Amdt 1B 26MAR20

39°30'N-119°46'W

RENO/TAHOE INTL (RNO)
RNAV (RNP) Y RWY 16L