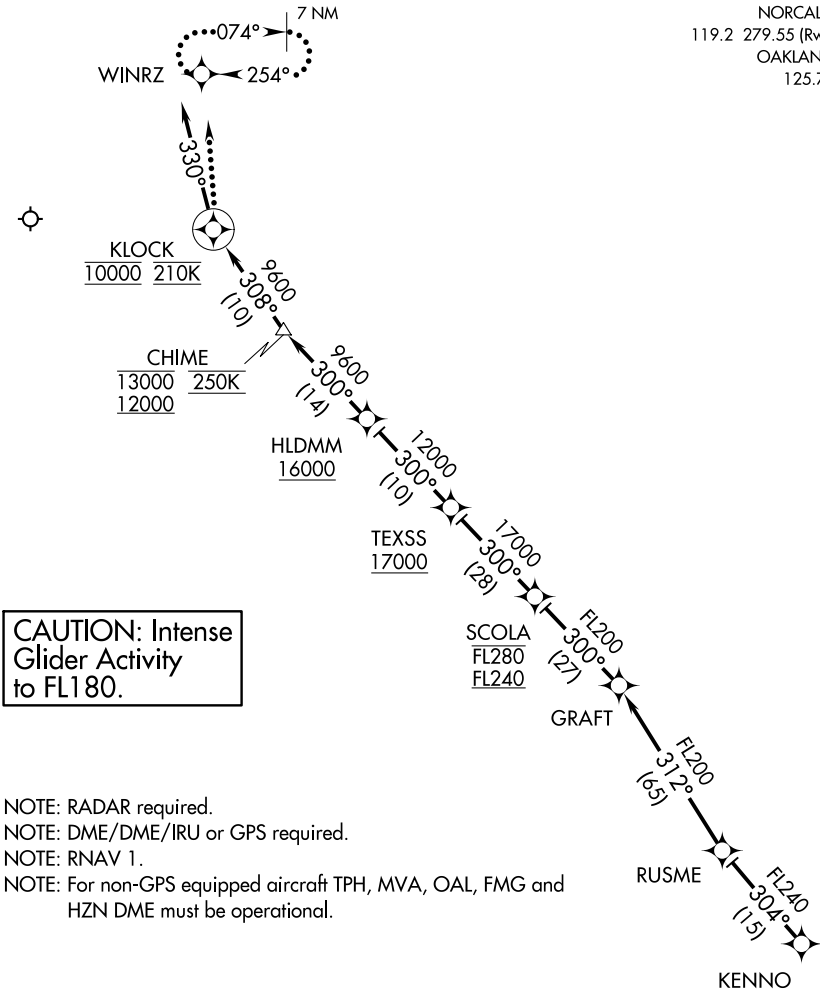


D-ATIS  
135.8 363.0  
NORCAL APP CON  
119.2 279.55 (Rwys 16 L/R)  
OAKLAND CENTER  
125.75 284.65



CAUTION: Intense  
Glider Activity  
to FL180.

- NOTE: RADAR required.  
NOTE: DME/DME/IRU or GPS required.  
NOTE: RNAV 1.  
NOTE: For non-GPS equipped aircraft TPH, MVA, OAL, FMG and HZN DME must be operational.

NOTE: Chart not to scale.

ARRIVAL ROUTE DESCRIPTION

From KENNO on track 304° to RUSME, then as depicted to cross KLOCK at 10000' at 210K, then on heading 330°. Rwy 16L/16R expect RADAR vectors to final approach course.

LOST COMMUNICATIONS:  
At KLOCK, turn right direct to WINRZ and hold, maintain 10000'.