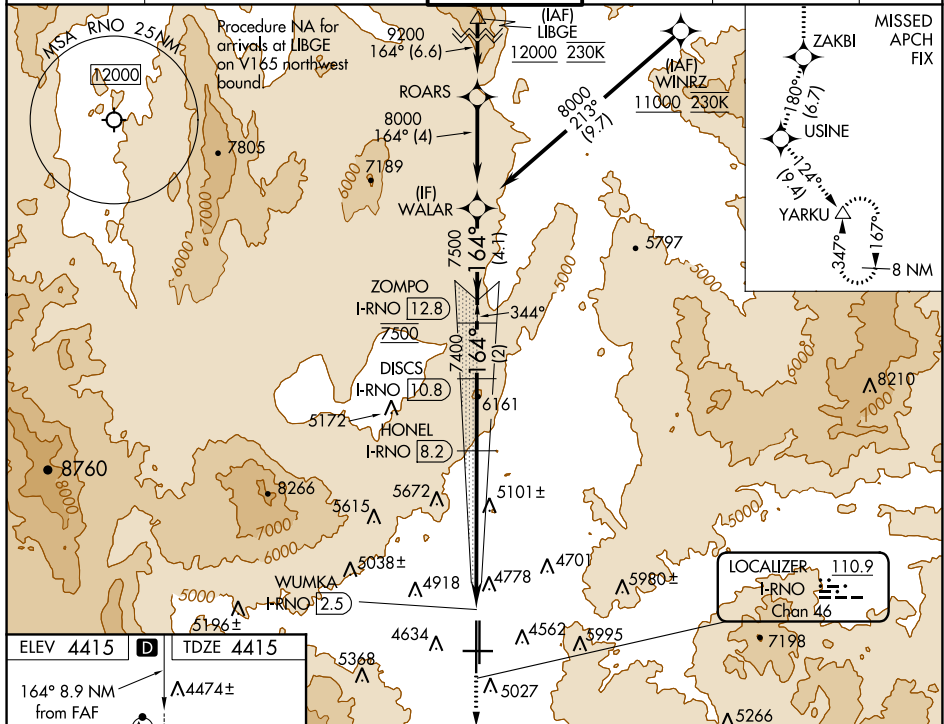


ILS X or LOC X RWY 16R  
RENO/TAHOE INTL (RNO)

**MISSED APPROACH:** Climb to 13000 on the RNAV missed approach route to YARKU and hold, continue climb-in-hold to 13000.  
- Missed approach requires minimum climb of 390 feet per NM to 8000.



|  |                           |                       |                           |  |                     |                     |                |
|--|---------------------------|-----------------------|---------------------------|--|---------------------|---------------------|----------------|
| 13000<br>↑   | ZAKBI<br>✱                | USINE<br>tr 180°<br>✱ | YARKU<br>tr 124°<br>△     | VGSI and ILS glidepath not coincident<br>(VGSI Angle 3.06/TCH 77). |                     |                     |                |
| * LOC only.  |                           |                       |                           | HONEL<br>I-RNO 8.2   | DISCS<br>I-RNO 10.8 | ZOMPO<br>I-RNO 12.8 | WALAR          |
| <p>Diagram showing the approach path with a 164° angle. Key points and distances include:<br/>         - WUMKA (I-RNO 2.5) to start: 0.6 NM<br/>         - Start to A: 2.2 NM<br/>         - A to B: 3.5 NM<br/>         - B to C: 2.6 NM<br/>         - C to D: 2 NM<br/>         - D to end: 4.1 NM<br/>         - Altitudes: 6540* (at B), 7400 (at C), 7500 (at D), 8000 (at end)<br/>         - GS 3.10° TCH 59</p> |                           |                       |                           |  |                     |                     |                |
| CATEGORY   | A                         |                       | B                         |  | C                   |                     | D              |
| S-ILS 16R†   |                           |                       | 4615/24                   |  | 200 (200-½)         |                     |                |
| S-ILS 16R#   |                           |                       | 5138-1⅞                   |  | 723 (800-1⅞)        |                     |                |
| S-LOC 16R  | 5420/40<br>1005 (1100-¾)  |                       | 5420/55<br>1005 (1100-1)  |  | 5420-2½             |                     | 1005 (1100-2½) |
| <b>C</b> CIRCLING  | 5420-1¼<br>1005 (1100-1¼) |                       | 5420-1½<br>1005 (1100-1½) |  | 6480-3              |                     | 2065 (2100-3)  |

SW-4, 03 DEC 2020 to 31 DEC 2020