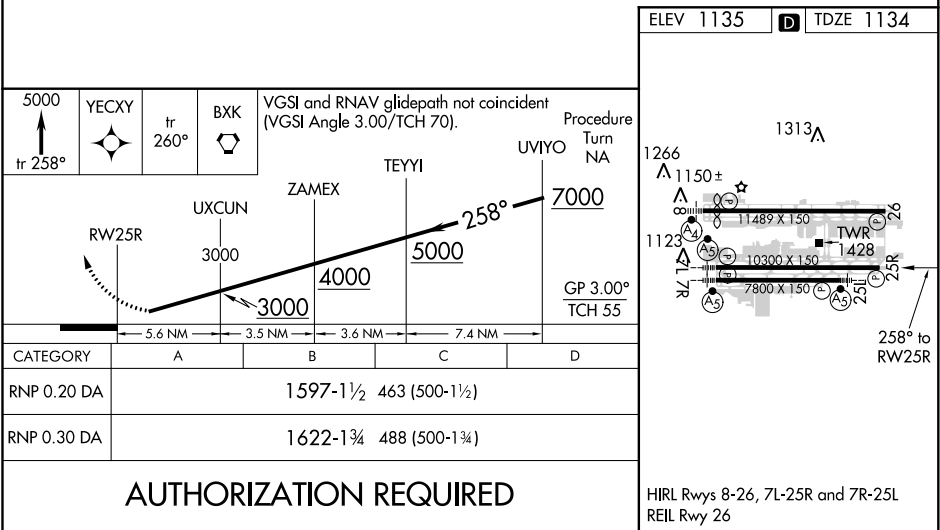
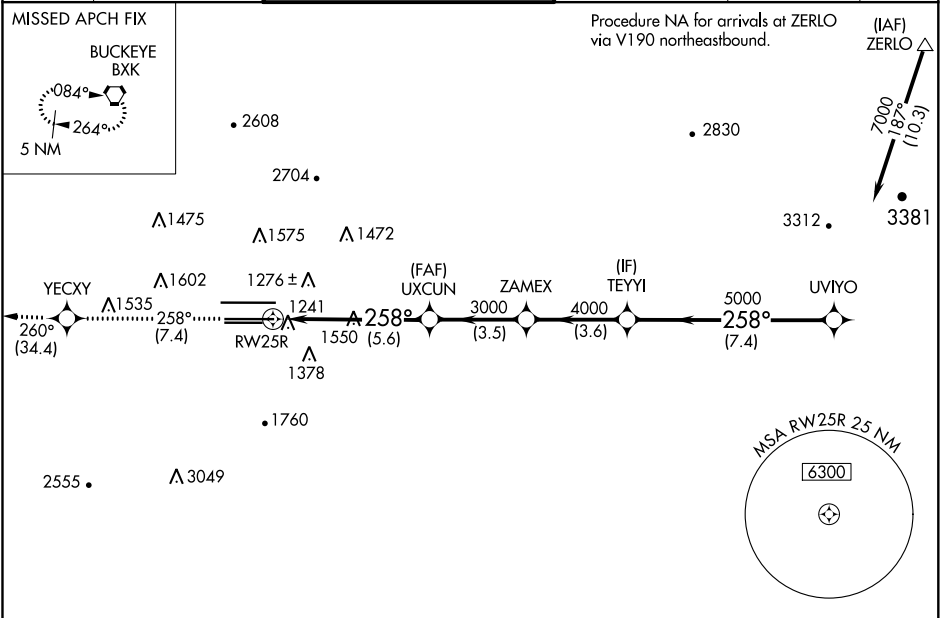


APP CRS	Rwy Idg	10300
258°	TDZE	1134
	Apt Elev	1135

RNAV (RNP) Z RWY 25R  
PHOENIX SKY HARBOR INTL (PHX)

<p>▼ Visibility reduction by helicopters NA. GPS required. For uncompensated Baro-VNAV systems, procedure NA below 1°C (34°F) or above 46°C (116°F). Simultaneous approach authorized with ILS or LOC Rwy 26. Use of FD or AP providing RNAV track guidance required during simultaneous operations.</p>	<p>MISSED APPROACH: Climb to 5000 via track 258° to YECXY and via track 260° to BKK VORTAC and hold.</p>
--	--

D-ATIS 127.575	PHOENIX APP CON 128.65 353.9	PHOENIX TOWER 118.7 278.8 (Rwy 8-26) 120.9 254.3 (Rwy 7L-25R, 7R-25L)	GND CON 119.75 269.2 (N) 132.55 269.2 (S)	CLNC DEL 118.1 269.2	CPDLC
-------------------	---------------------------------	---	---	-------------------------	-------



SW-4, 03 DEC 2020 to 31 DEC 2020

SW-4, 03 DEC 2020 to 31 DEC 2020