

TOP ALTITUDE:  
8000

D-ATIS  
127.575  
CUNCL DEL  
118.1 269.2  
CPDLC  
GND CON  
119.75 269.2 (NORTH)  
132.55 269.2 (SOUTH)  
PHOENIX TOWER  
118.7 278.8 (Rwy 8-26)  
120.9 254.3 (Rwys 7L-25R, 7R-25L)  
PHOENIX DEP CON  
126.8 269.6

DEPARTURE ROUTE DESCRIPTION

TAKEOFF RUNWAYS 7L/R, 8: Climb heading 078° to 1635, then direct FUTEP, then on track 132° to AZCRD, then on track 199° to USEYE, then on track 264° to cross MASVE at/above 7000 and at/below 220K, then on track 264° to OAKLI, then on track 268° to KEENS, thence. . . .

TAKEOFF RUNWAYS 25L/R: Climb heading 258° to intercept course 240° to WULKO, then on track 268° to KEENS, thence. . . .

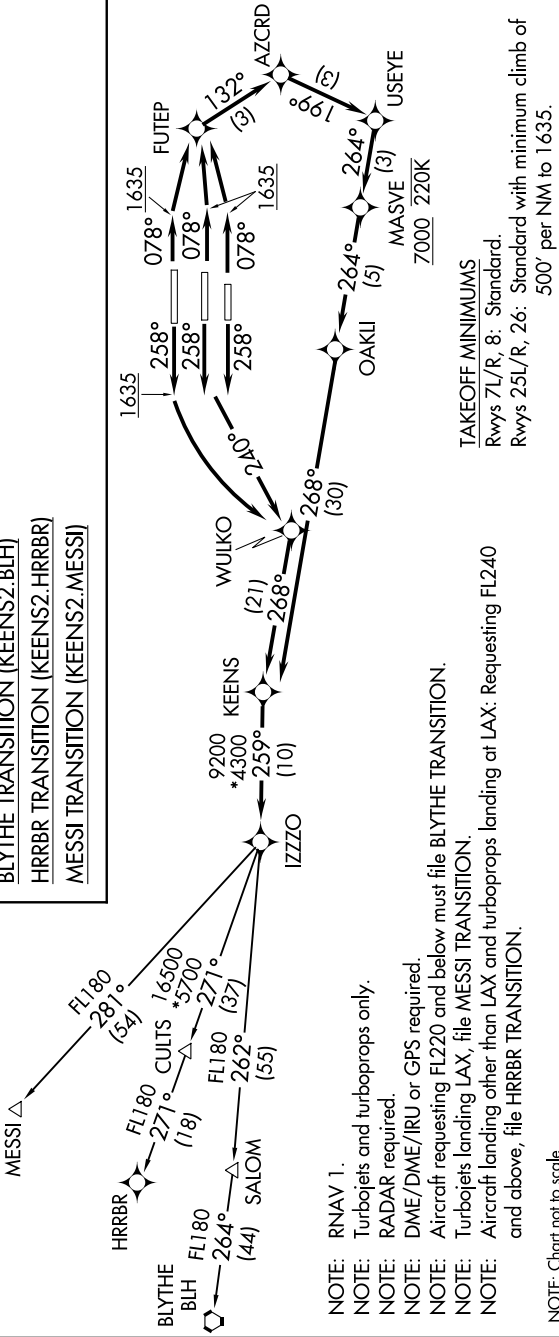
TAKEOFF RUNWAY 26: Climb heading 258° to 1635, then left turn direct WULKO, then on track 268° to KEENS, thence. . . .

. . . on track 259° to IZZZO, then on (transition). Maintain 8000, expect higher altitude 3 minutes after departure.

BLYTHE TRANSITION (KEENS2.BLH)

HRBR TRANSITION (KEENS2.HRRBR)

MESSI TRANSITION (KEENS2.MESSI)



TAKEOFF MINIMUMS

Rwys 7L/R, 8: Standard.

Rwys 25L/R, 26: Standard with minimum climb of 500' per NM to 1635.