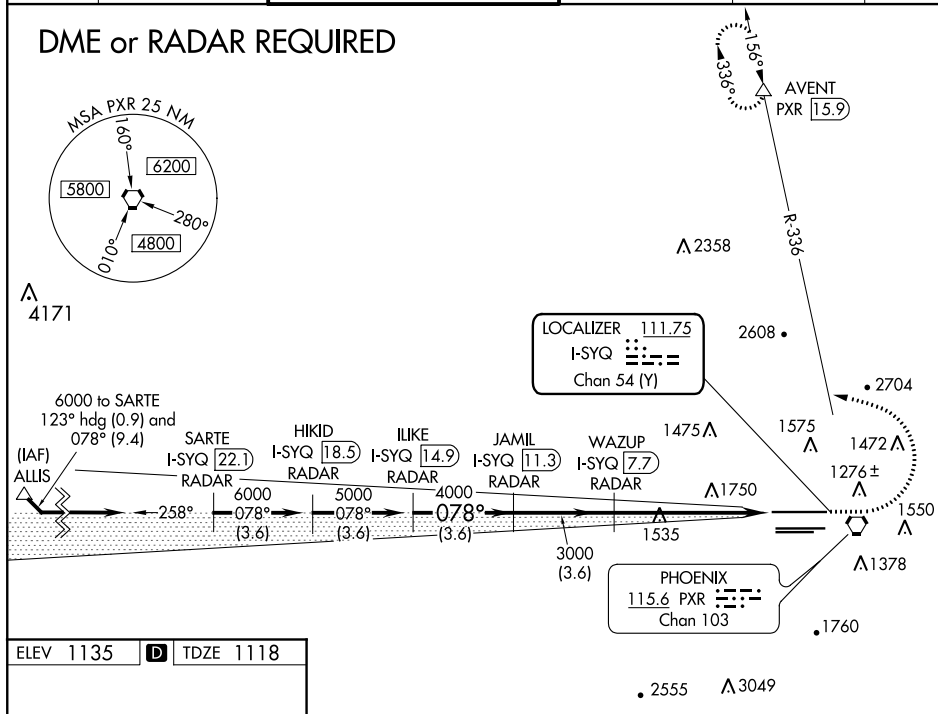


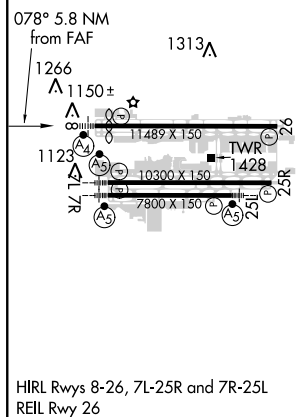
ILS or LOC RWY 8
PHOENIX SKY HARBOR INTL (PHX)

MISSED APPROACH: Climb to 3000, then climbing left turn to 5000 via heading 280° and PXR R-336 to AVENT/PXR 15.9 DME and hold.

D-ATIS 127.575	PHOENIX APP CON 128.65 353.9	PHOENIX TOWER 118.7 278.8 (Rwy 8-26) 120.9 254.3 (Rwy 7L-25R, 7R-25L)	GND CON 119.75 269.2 (N) 132.55 269.2 (S)	CLNC DEL 118.1 269.2	CPDLC
--------------------------	--	---	---	--------------------------------	-------



ELEV 1135	D	TDZE 1118
-----------	----------	-----------



PHOENIX, ARIZONA
Orig-E 23APR20

33°26'N-112°01'W

PHOENIX SKY HARBOR INTL (PHX)
ILS or LOC RWY 8