

LOC/DME I-AHA 110.75 Chan 44 (Y)	APP CRS 078°	Rwy Idg 7800 TDZE 1116 Apt Elev 1135
--	------------------------	---

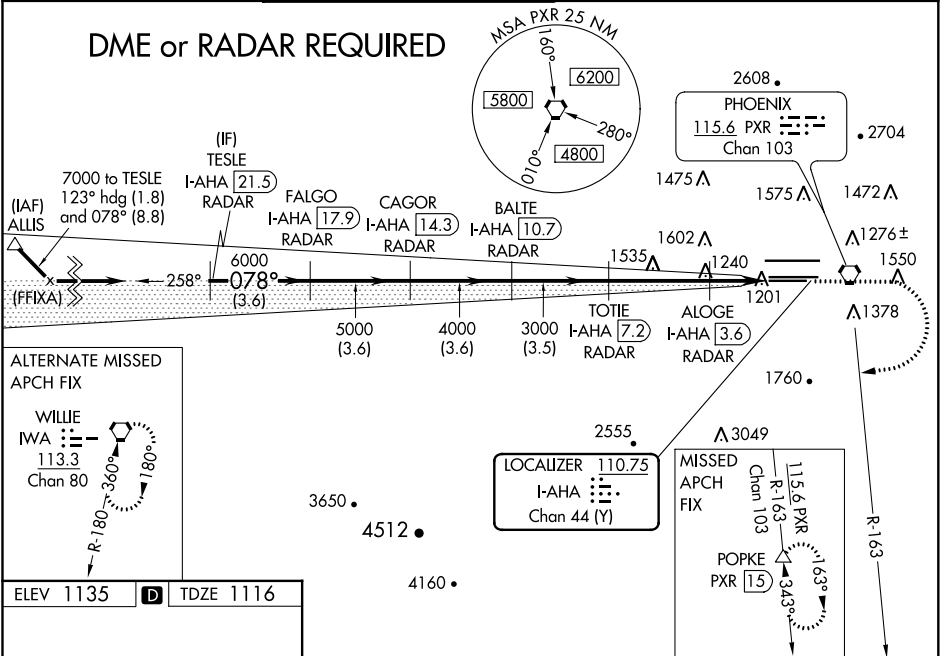
ILS or LOC RWY 7R
PHOENIX SKY HARBOR INTL (PHX)

⚠ Inoperative table does not apply to S-ILS 7R. Simultaneous approach authorized with ILS or LOC Rwy 8. DME required. Rwy 7R helicopter visibility reduction below 3/4 SM NA. LOC procedure NA during simultaneous operations. For inoperative ALS, increase S-LOC 7R visibility Cats A/B to 1 SM and Cats C/D to 1 1/2 SM.

MALSR

MISSED APPROACH: Climb to 3300 then climbing right turn to 5000 on heading 250° and PXR VORTAC R-163 to POPKE/PXR 15 DME and hold.

D-ATIS 127.575	PHOENIX APP CON 128.65 353.9	PHOENIX TOWER 118.7 278.8 (Rwy 8-26) 120.9 254.3 (Rwy 7L-25R, 7R-25L)	GND CON 119.75 269.2 (N) 132.55 269.2 (S)	CLNC DEL 118.1 269.2	CPDLC
--------------------------	--	---	---	--------------------------------	-------



ELEV 1135 **D** TDZE 1116

VGSI and ILS glidepath not coincident (VGSI Angle 3.00/TCH 70).

SW-4, 03 DEC 2020 to 31 DEC 2020

SW-4, 03 DEC 2020 to 31 DEC 2020