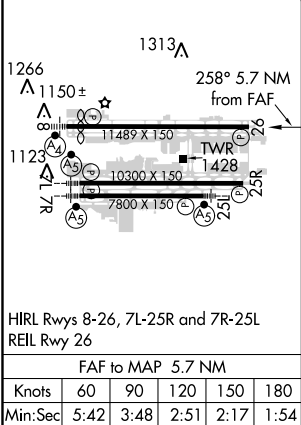
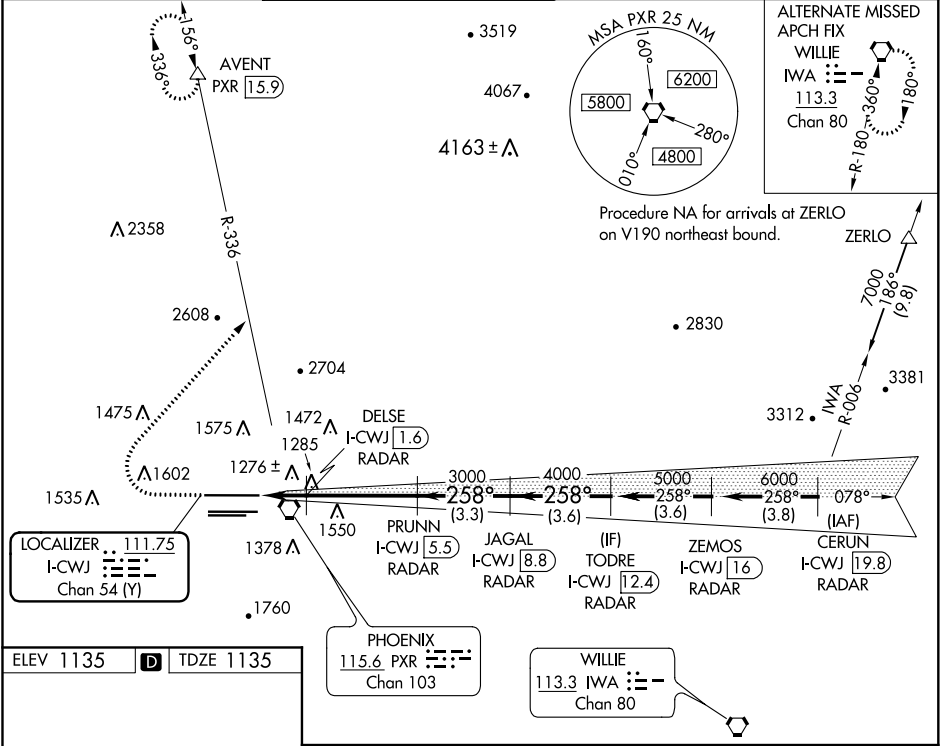


LOC/DME I-CWJ 111.75 Chan 54 (Y)	APP CRS 258°	Rwy Idg 11489 TDZE 1135 Apt Elev 1135
--	------------------------	--

ILS or LOC RWY 26
PHOENIX SKY HARBOR INTL (PHX)

DME or RADAR required.	MISSED APPROACH: Climb to 2500 then climbing right turn to 5000 on heading 030° and PXR VORTAC R-336 to AVENT/PXR 15.9 DME and hold.
Simultaneous approach authorized.	

D-ATIS 127.575	PHOENIX APP CON 128.65 353.9	PHOENIX TOWER 118.7 278.8 (Rwy 8-26) 120.9 254.3 (Rwy 7L-25R, 7R-25L)	GND CON 119.75 269.2 (N) 132.55 269.2 (S)	CLNC DEL 118.1 269.2	CPDLC
--------------------------	--	---	---	--------------------------------	-------



2500	5000	PXR R-336	AVENT	VGSI and ILS glidepath not coincident (VGSI Angle 3.00/TCH 71).
↑	hdg 030°			JAGAL I-CWJ [8.8] RADAR
Use I-CWJ DME when on the localizer course.	DELS I-CWJ [1.6] RADAR	PRUNN I-CWJ [5.5] RADAR	TODRE I-CWJ [12.4] RADAR	
*LOC only.	*I-CWJ [0.2]	I-CWJ [1]	3000	258° 5000
			1740*	3000
	1.2 NM	0.5	4 NM	3.3 NM
CATEGORY	A	B	C	D
S-ILS 26	1385-3/4 250 (300-3/4)			
S-LOC 26	1580-1 445 (500-1)		1580-1 3/8 445 (500-3/8)	
CIRCLING	1740-1 605 (700-1)		2040-2 3/4 905 (1000-2 3/4) 2560-3 1425 (1500-3)	

SW-4, 03 DEC 2020 to 31 DEC 2020

SW-4, 03 DEC 2020 to 31 DEC 2020