

TOP ALTITUDE:
8000

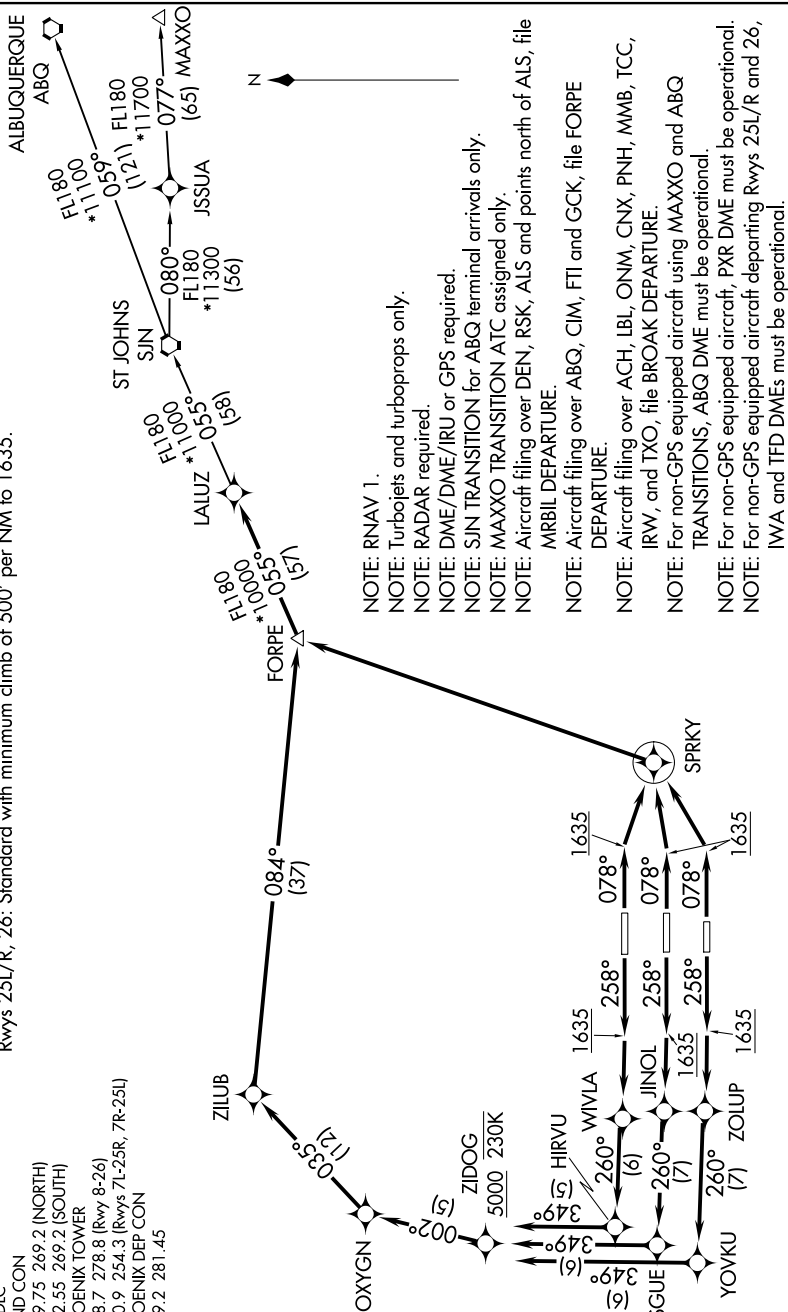
TAKEOFF MINIMUMS

Rwys 7L/R, 8: Standard with minimum climb of 500' per NM to 1635 then minimum climb of 250' per NM to 7300.
Rwys 25L/R, 26: Standard with minimum climb of 500' per NM to 1635.

D-ATIS
1127.575
CLNC D
1118.1
CPDLC
GND CC
1119.75
132.55
PHOENI
1118.7
1120.9
PHOENI
1119.2

FORPE ONE DEPARTURE (RNAV)
(FORPE1.FORPE) 24MAY18

PHOENIX, ARIZONA
PHOENIX SKY HARBOR INTL (PHX)



(NARRATIVE ON FOLLOWING PAGE)

NOTE: Chart not to scale.

SW-4, 03 DEC 2020 to 31 DEC 2020