

ATIS ★134.925 269.9
CLNC DEL
126.25 273.475
GND CON
133.175 335.8
LUKE TOWER ★
119.1 379.9
LUKE DEP CON
118.15 363.125

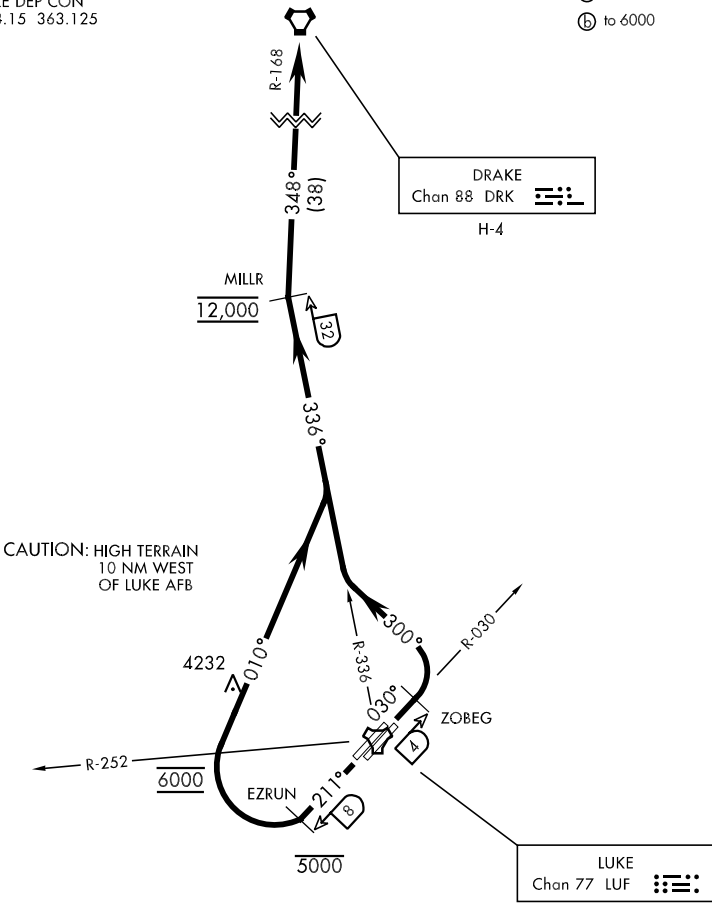
SH-321 [USAF]

GLENDALE, ARIZONA

| Rwy | Knots | 120 | 180 | 240 | 300 | 360 |
|--------|------------|-----|------|------|------|------|
| † 3L | ⊙ V/V(fpm) | 670 | 1000 | 1340 | 1670 | 2000 |
| † 3R | ⊙ V/V(fpm) | 670 | 1010 | 1340 | 1680 | 2010 |
| ★21L/R | ⊙ V/V(fpm) | 860 | 1290 | 1720 | 2150 | 2580 |

* Minimum † ATC Climb Rate

- ⊙ to 12,000
- Ⓟ to 6000



DEPARTURE ROUTE DESCRIPTION

TAKE-OFF RWY 3 L/R: Climb on a track of 030°. Abeam ZOBEG (LUF R-030/04) turn left and track 300° to intcp and proceed via LUF R-336 to MILLR (LUF R-336/32) then via DRK R-168 to DRK. Cross MILLR at and maintain 12,000 or as assigned by ATC.

TAKE-OFF RWY 21 L/R: Climb on a track of 211°. Abeam EZRUN (LUF R-211/08) turn right to track 010° to intcp and proceed via LUF R-336 to MILLR (LUF R-336/32) then via DRK R-168 to DRK. Cross 8 DME at or below 5000, cross LUF R-252 at 6000, cross MILLR at and maintain 12,000 or as assigned by ATC.