

VORTAC MLF 112.1 Chan 58	APP CRS 344°	Rwy Idg TDZE Apt Elev 5039	N/A N/A 5039
--	------------------------	--	---------------------------

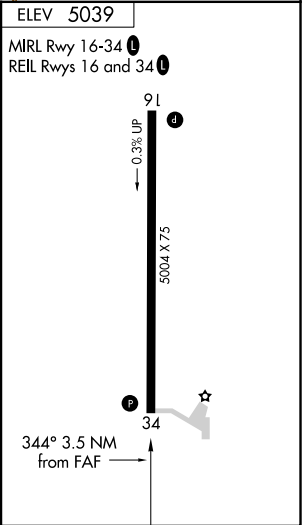
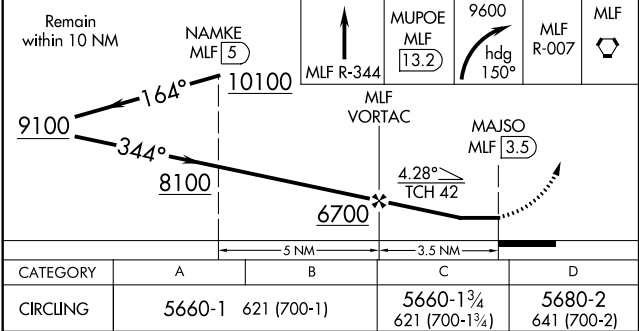
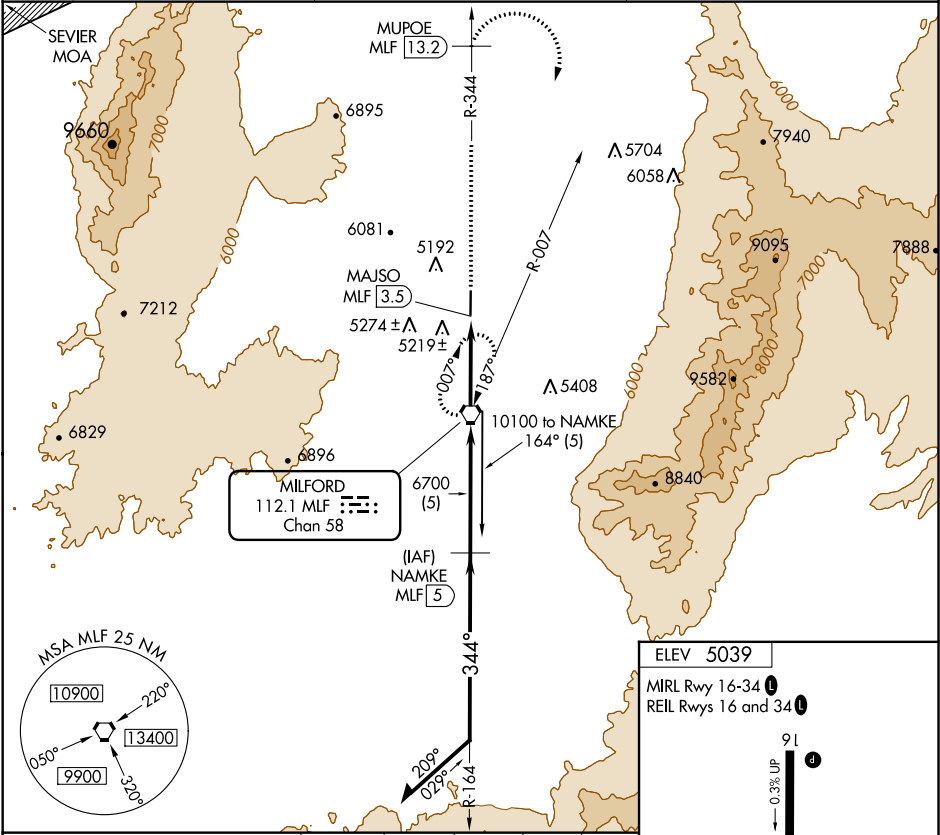
VOR/DME-A

MILFORD MUNI/BEN AND JUDY BRISCOE FIELD (MLF)

When local altimeter setting not received, use Cedar City altimeter setting and increase MDA 200 feet, and increase Cat C visibility ½ mile and Cat D visibility ¾ mile. When VGSI inop, procedure NA at night. Visibility reduction by helicopters NA.

MISSED APPROACH: Climb on MLF VORTAC R-344 to MUPOE/MLF 13.2 DME then climbing right turn to 9600 on heading 150° and MLF VORTAC R-007 to MILFORD VORTAC and hold.

ASOS 135.025	SALT LAKE CENTER 125.575 379.275	UNICOM 122.8 (CTAF) 0
------------------------	--	---------------------------------



VOR/DME-A

SW-4, 03 DEC 2020 to 31 DEC 2020

SW-4, 03 DEC 2020 to 31 DEC 2020