

HI-TACAN Z RWY 21L

TACAN Chan 12	LSV 210°	APCH CRS 210°	Rwy ldg 21L 10,051 TDZE 1865 Arprt Elev 1869	Rwy ldg 21R 10,120 TDZE 1869	JAL-227 [USAF]	NELLIS AFB (KLSV)
------------------	-------------	------------------	---	---	----------------	-------------------

▼* When ALS inop, increase CAT CDE vis to 1 1/2 miles.

** Circling not authorized E of Rwy 3R-21L.



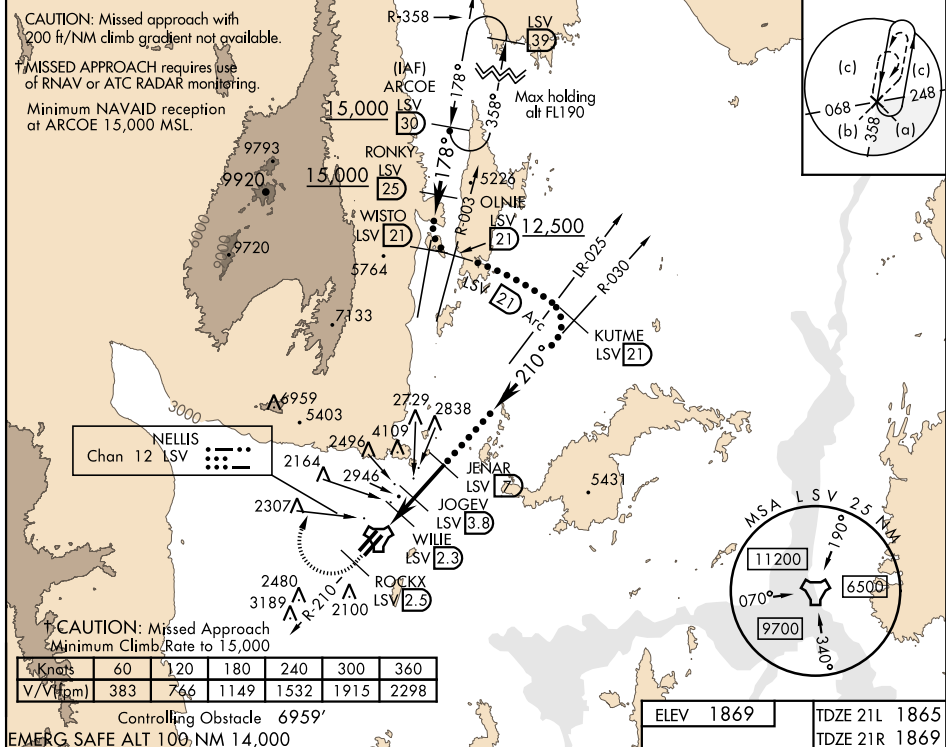
† MISSED APPROACH: Climb to 15,000, intercept LSV TACAN R-210 to 2.5 DME (ROCKX), then climbing right turn heading 020° to join LSV R-358 to ARCOE and hold, continue climb in hold to 15,000. Missed approach not for civil use.

ATIS 270.1	NELLIS APP CON 124.95 273.55	NELLIS TOWER 132.55 327.0	GND CON 121.8 275.8	CLNC DEL 120.9 289.4
---------------	---------------------------------	------------------------------	------------------------	-------------------------

CAUTION: Missed approach with 200 ft/NM climb gradient not available.

† MISSED APPROACH requires use of RNAV or ATC RADAR monitoring.

Minimum NAVAID reception at ARCOE 15,000 MSL.

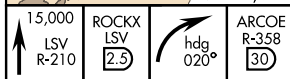


Knots	60	120	180	240	300	360
-------	----	-----	-----	-----	-----	-----

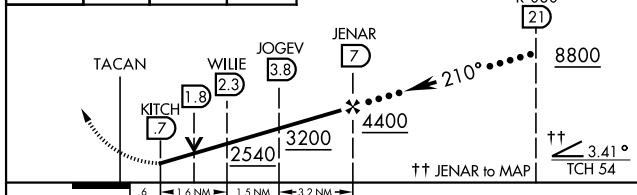
V/V (ft/min)	383	766	1149	1532	1915	2298
--------------	-----	-----	------	------	------	------

Controlling Obstacle 6959'

EMERG SAFE ALT 100 NM 14,000

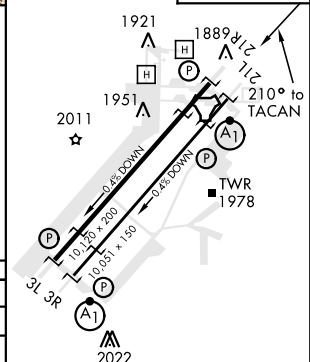


VGSI and descent angles not coincident (VGSI angle 3.00/TCH 54).



CATEGORY	C	D	E
S-21L *	2460-1 1/4	595 (600-1 1/4)	
SIDESTEP 21R	2460-1	591 (600-1)	
CIRCLING **	2620-2 1/4 751 (800-2 1/4)	2840-3 971 (1000-3)	3040-3 1171 (1200-3)

ELEV 1869	TDZE 21L 1865	TDZE 21R 1869
-----------	---------------	---------------



HIRL all Rwy