
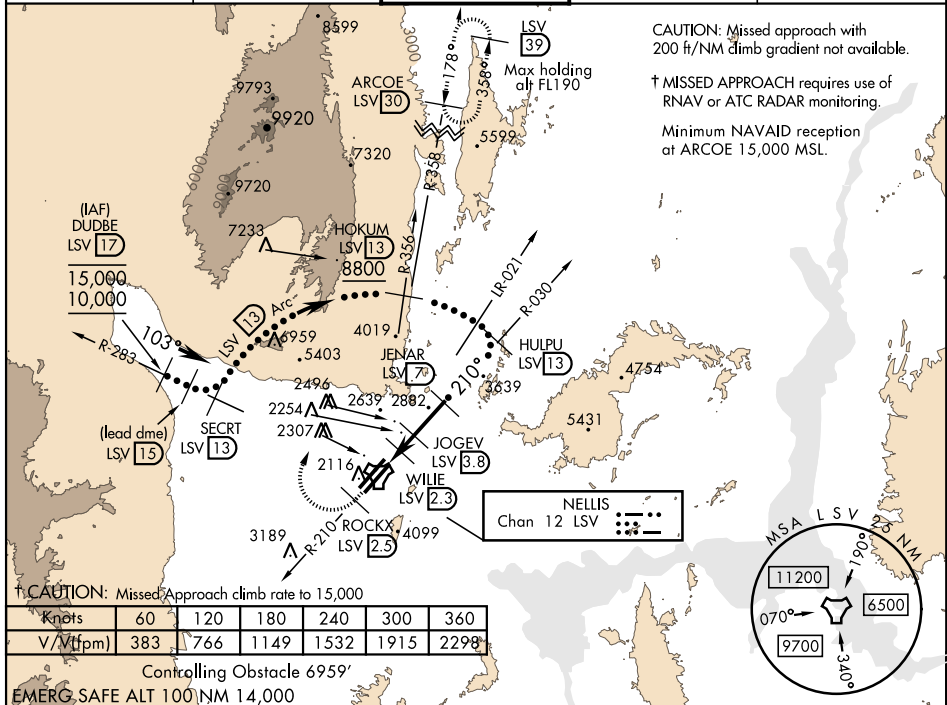


LAS VEGAS, NEVADA

TACAN LSV Chan 12	APCH CRS 210°	Rwy Idg 21L 10,051 TDZE 1865 Arpt Elev 1869	Rwy Idg 21R 10,120 TDZE 1869	JAL-227 [USAF]	NELLIS AFB (KLSV)
----------------------	------------------	---	---------------------------------	----------------	-------------------

<p> [†] When ALS inop, increase CAT CDE vis to 1¾ miles. ** Circling not authorized E of Rwy 3R-21L. </p>	<p> ALSF-1  </p>	<p> [†] MISSED APPROACH: Climb to 15,000, intercept LSV TACAN R-210 to 2.5 DME (ROCKX), then climbing right turn heading 020° to join LSV R-358 to ARCOE and hold, continue climb in hold to 15,000. Missed approach not for civil use. </p>
---	--	---



ATIS 270.1	NELLIS APP CON 124.95 273.55	NELLIS TOWER 132.55 327.0	GND CON 121.8 275.8	CLNC DEL 120.9 289.4
---------------	---------------------------------	------------------------------	------------------------	-------------------------

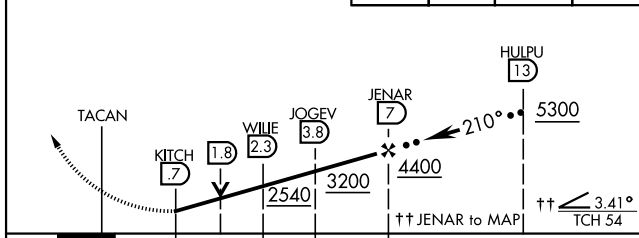


Knots	60	120	180	240	300	360
V/V _{tfpm})	383	766	1149	1532	1915	2298

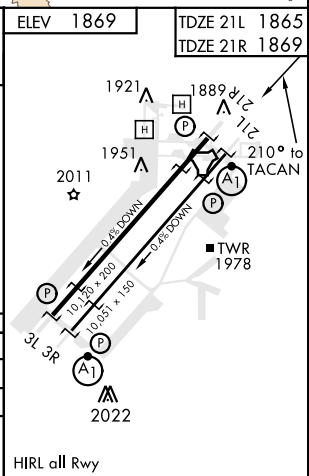
Controlling Obstacle 6959'
EMERG SAFE ALT 100 NM 14,000

VGSI and descent angles not coincident
(VGSI angle 3.00/TCH 54).

 15,000 LSV R-210	ROCKX LSV 2.5	 hdg 020°	ARCOE R-358 30
--	---------------------	---	----------------------



	6 NM	← 1.6 NM →	1.5 NM	← 3.2 NM →	
CATEGORY	C		D	E	
S-21L *	2460-1 1/4		595	(600-1 1/4)	
SIDESTEP 21R	2460-1		591	(600-1)	
C CIRCLING **	2620-2 1/4 751 (800-2 1/4)		2840-3 971 (1000-3)	3040-3 1171 (1200-3)	



HI-TACAN Y RWY 21L