

FALLON, NEVADA

RNAV (GPS) RWY 13R

|          |            |        |
|----------|------------|--------|
| APCH CRS | Rwy Idg    | 14,001 |
| 131°     | TDZE       | 3935   |
|          | Arprt Elev | 3935   |

AL-143 (USN)

FALLON NAS (VAN VOORHIS FLD) (KNFL)

† MISSED APPROACH: Climb to 9800 direct HOROD and hold. Continue climb-in-hold. Max 175 KIAS until 9800. Missed apch requires minimum climb of 270 ft/nm to 9800.

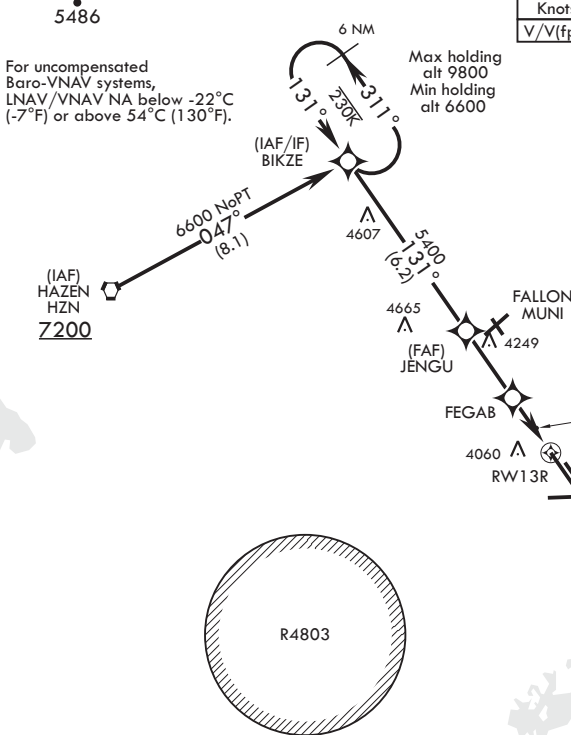
|         |                             |                    |         |          |         |
|---------|-----------------------------|--------------------|---------|----------|---------|
| ATIS★   | NAVY FALLON APP CON/DEP CON | NAVY FALLON TOWER★ | GND CON | CLNC DEL | ASR/PAR |
| 370.925 | 120.85 360.2                | 119.25 340.2       | 251.15  | 353.55   |         |

DME/DME RNP-0.3 NA

† CAUTION: Missed Approach  
Minimum Climb Rate to 5100

| Knots    | 60  | 120 | 180 | 240  | 300  | 360  |
|----------|-----|-----|-----|------|------|------|
| V/V(fpm) | 270 | 540 | 810 | 1080 | 1350 | 1620 |

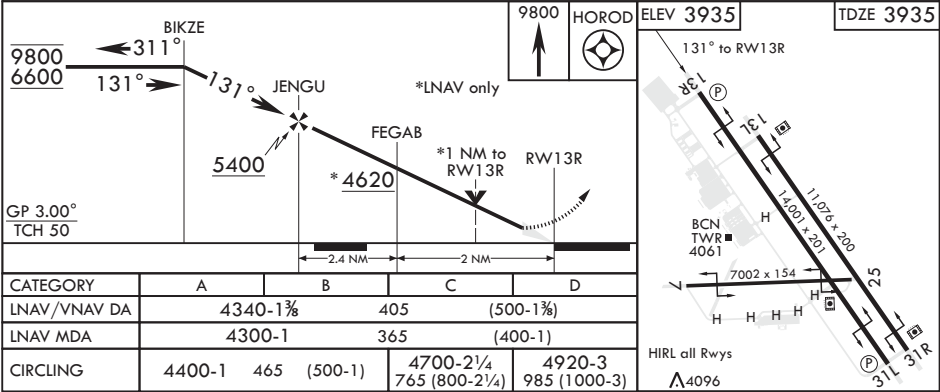
Controlling Obstacle 4662



NOT FOR CIVIL USE

CAUTION: Fallon Muni  
Airport (uncontrolled) 5 NM  
NW. Pattern alt 800 ft AGL.

EMERG SAFE ALT 100 NM 15,600



FALLON, NEVADA

39°25'N - 118°42'W

FALLON NAS (VAN VOORHIS FLD) (KNFL)

Amdt 3 03JAN19

RNAV (GPS) RWY 13R

SW-4, 03 DEC 2020 to 31 DEC 2020

SW-4, 03 DEC 2020 to 31 DEC 2020