
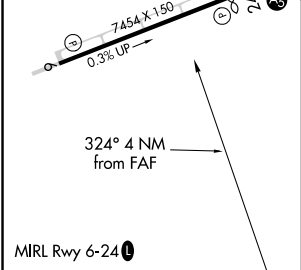
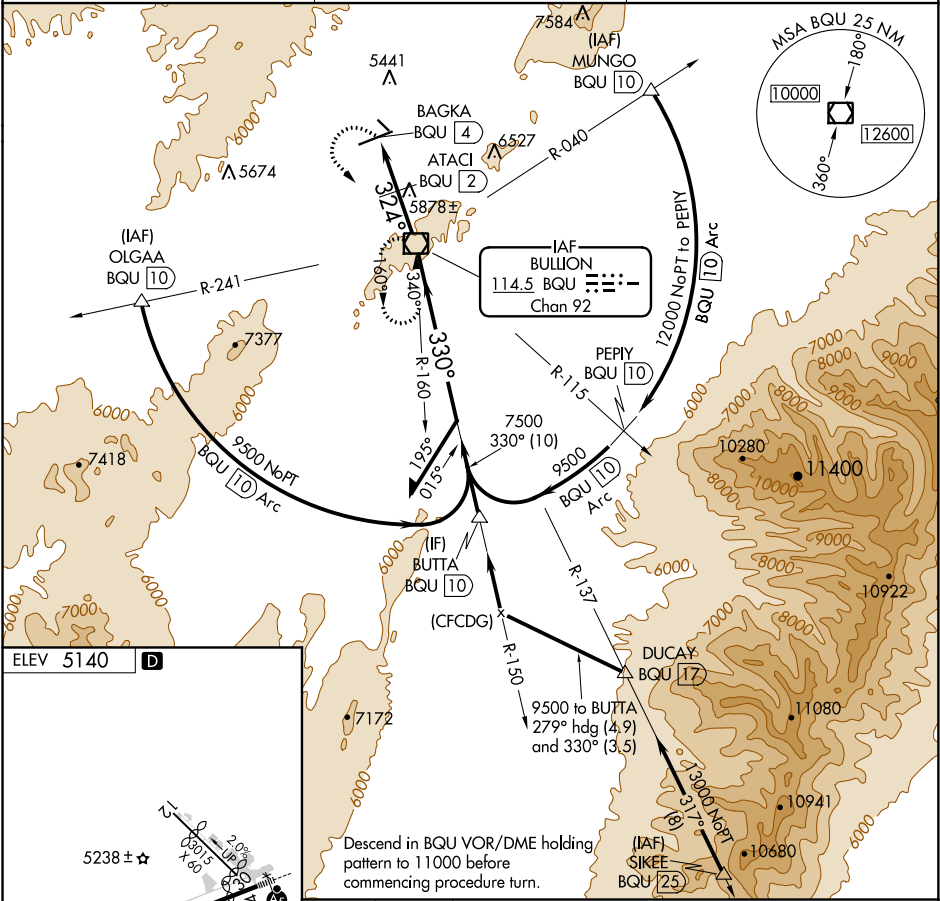




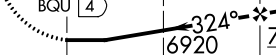
VOR/DME BQU	APP CRS	Rwy Idg	N/A
114.5	324°	TDZE	N/A
Chan 92		Apt Elev	5140

VOR/DME-B
ELKO RGNL (EKO)

 -24°C	Girding NA for Cats C and D southeast of Rwy 6-24. Girding Rwy 24 NA at night.	MISSED APPROACH: Climbing left turn to 10000 direct BQU VOR/DME and hold, continue climb-in-hold to 10000.
--	---	--

ASOS 119.275	SALT LAKE CENTER 132.25 338.35	UNICOM 123.0 (CTAF) 0
-----------------	-----------------------------------	--------------------------



10000	BQU	BQU VOR/DME	Remain within 10 NM	
	ATACI BQU (2)	150°	9500	
	BAGKA BQU (4)	324°	330°	7500
		6920		
CATEGORY	A	B	C	D
CIRCLING	6400-1¼ 1260 (1300-1¼)	6400-1½ 1260 (1300-1½)	6400-3	1260 (1300-3)