

| | | |
|---------|----------|------|
| APP CRS | Rwy Idg | 7217 |
| 057° | TDZE | 5051 |
| | Apt Elev | 5140 |

RNAV (GPS) RWY 6

ELKO RGNL (EKO)

RNP APCH.

▼

▲

❄

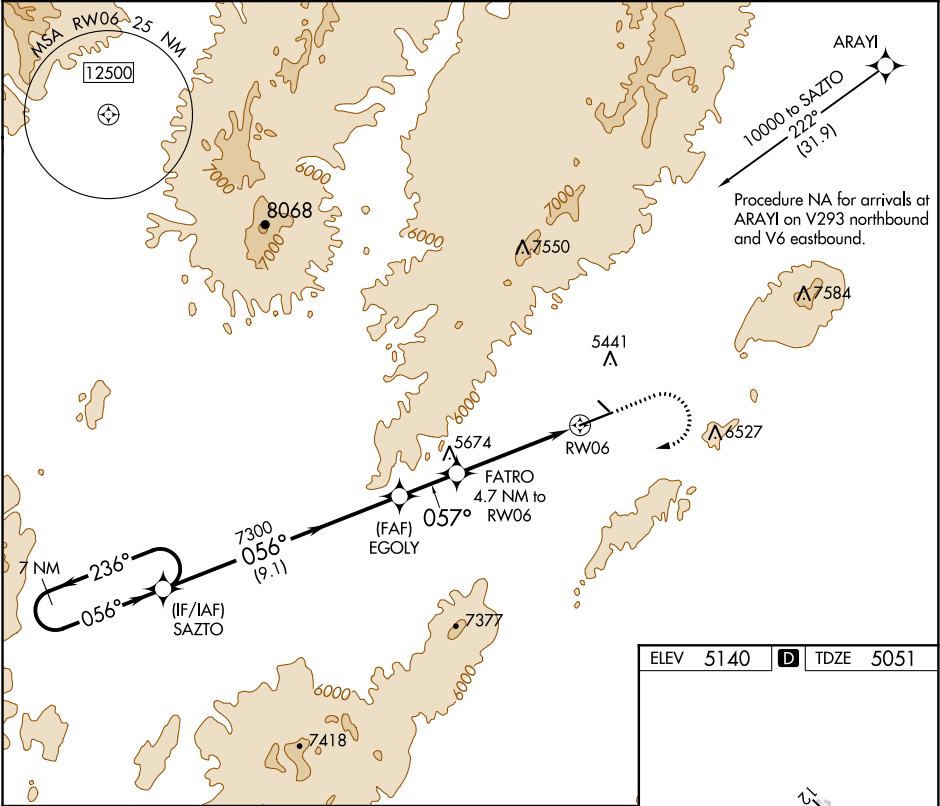
Circling Rwy 24 NA at night.

Rwy 6 helicopter visibility reduction below ¾ SM NA.

-24°C

MISSED APPROACH: Climb to 6800 then climbing right turn to 10000 direct SAZTO and hold, continue climb-in-hold to 10000.

| | | |
|-----------------|-----------------------------------|--------------------------|
| ASOS 119.275 | SALT LAKE CENTER 132.25 338.35 | UNICOM 123.0 (CTAF) 0 |
|-----------------|-----------------------------------|--------------------------|



7 NM Holding Pattern

SAZTO

EGOLY

FATRO 4.7 NM to RWY06

3.7 NM to RWY06

RWY06

10000

236°

056°

056°

056°

7300

3.00°

TCH 41

057°

6600

6800

10000

SAZTO

9.1 NM

2.2 NM

1 NM

3.7 NM

| CATEGORY | A | B | C | D |
|----------|---------------------------|---------------------------|-------------------------|-------------------------|
| LNAV MDA | 6280-1¼ 1229 (1200-1¼) | 6280-1½ 1229 (1200-1½) | 6280-3 1229 (1200-3) | |
| CIRCLING | 6280-1¼ 1140 (1200-1¼) | 6280-1½ 1140 (1200-1½) | 6640-3 1500 (1500-3) | 6960-3 1820 (1900-3) |

ELEV 5140

TDZE 5051

5238 ±

7454 X 150

0.3% UP

057° to RWY06

MIRL Rwy 6-24 0

SW-4, 03 DEC 2020 to 31 DEC 2020

SW-4, 03 DEC 2020 to 31 DEC 2020