

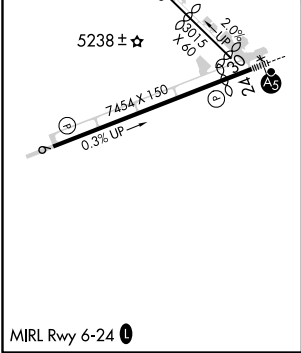
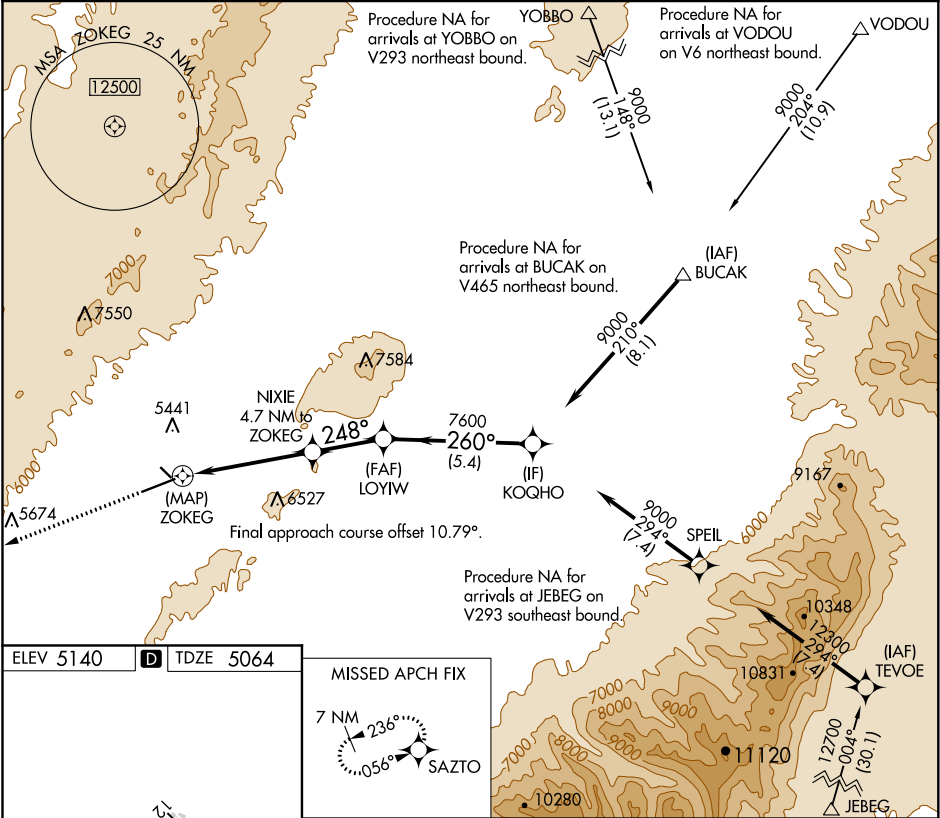
APP CRS	Rwy Idg	<b>6418</b>
<b>248°</b>	TDZE	<b>5064</b>
	Apt Elev	<b>5140</b>

# RNAV (GPS) RWY 24

ELKO RGNL (EKO)

RNP APCH.	MALS R	MISSED APPROACH: Climb to 10000 direct SAZTO and hold, continue climb-in-hold to 10000.
 Inop table does not apply to Cats C/D. Circling Rwy 24 NA at night. Rwy 24 helicopter visibility reduction below 3/4 SM NA. -24°C		

ASOS <b>119.275</b>	SALT LAKE CENTER <b>132.25 338.35</b>	UNICOM <b>123.0 (CTAF) 0</b>
------------------------	--	---------------------------------



10000	SAZTO	VGSI and descent angles not coincident (VGSI Angle 3.25/TCH 51).		KOQHO
ZOKEG		LOYIW		9000
2.9 NM to ZOKEG		2.6 NM		5.4 NM
6780		7600		
248°		260°		
0.3% UP		3.00° TCH 51		
0.5		0.5		
CATEGORY	A	B	C	D
LNAV MDA	6260-3/4 1196 (1200-3/4)	6260-1 1196 (1200-1)	6260-3 1196 (1200-3)	1196 (1200-3)
CIRCLING	6260-1 1/4 1120 (1200-1 1/4)	6260-1 1/2 1120 (1200-1 1/2)	6640-3 1500 (1500-3)	6960-3 1820 (1900-3)

SW-4, 03 DEC 2020 to 31 DEC 2020

SW-4, 03 DEC 2020 to 31 DEC 2020