

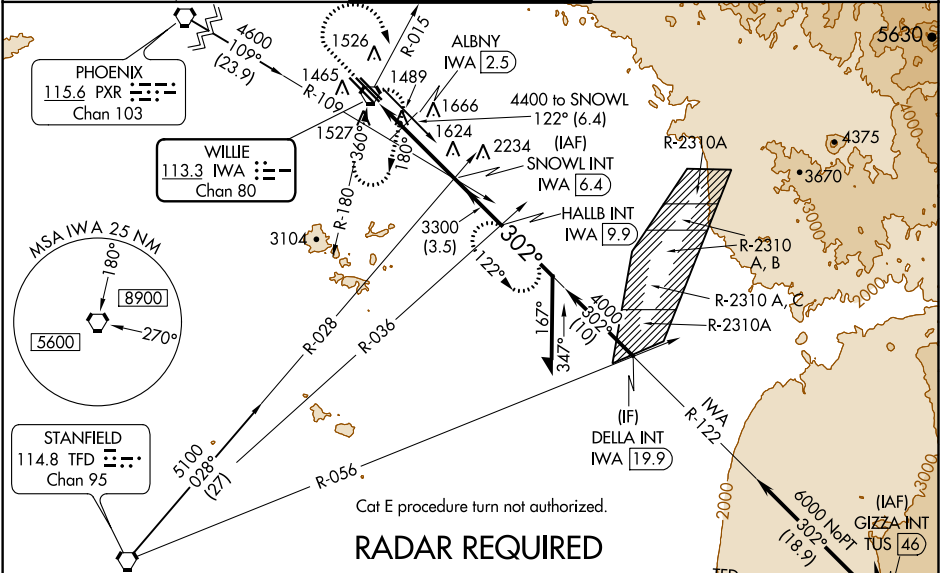
VORTAC IWA 113.3 Chan 80	APP CRS 302°	Rwy Idg TDZE Apt Elev	30C 10201 1380 1382	30R 9301 1382 1382
--	------------------------	-----------------------------	---	--




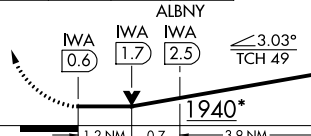
VOR or TACAN RWY 30C
PHOENIX-MESA GATEWAY (IWA)

When local altimeter setting not received, use Phoenix Sky Harbor Intl altimeter setting and increase all MDA 80 feet, increase S-30C, SIDESTEP 30R all Cats visibility ¼ mile, circling Cats A/B/C visibility ¼ mile, Cat E ½ mile.

MISSED APPROACH: Climb to 2800 then climbing right turn to 5000 via heading 145° and IWA VORTAC R-015 to IWA VORTAC and hold, continue climb-in-hold to 5000 (TACAN aircraft continue via IWA VORTAC R-122 to HALLB INT/IWA 9.9 DME and hold, continue climb-in-hold to 5000, hold SE, LT, 302° inbound).

ATIS ★ 133.5 270.275	PHOENIX APP CON 124.9 353.8	GATEWAY TOWER ★ 120.6 (CTAF) 289.4	GND CON 128.25 275.8	CLNC DEL 135.05
--------------------------------	---------------------------------------	--	--------------------------------	---------------------------



2800	5000	IWA R-015	IWA	SNOWL INT IWA 6.4	Remain within 10 NM
					
					
CATEGORY	A		B		
S-30C	1940-1		560 (600-1)	C 1940-1½ 560 (600-1½)	D 1940-1¾ 560 (600-1¾)
SIDESTEP 30R	1940-1		558 (600-1)	1940-1½ 558 (600-1½)	1940-2 558 (600-2)
CIRCLING	1940-1		558 (600-1)	1940-1½ 558 (600-1½)	1940-2 558 (600-2)
					2020-2¼ 638 (700-2¼)
DME MINIMUMS					
S-30C	1800-1		420 (500-1)	1800-1¼ 420 (500-1¼)	1800-1½ 420 (500-1½)
SIDESTEP 30R	1800-1		418 (500-1)	1800-1½ 418 (500-1½)	1800-2 418 (500-2)
CIRCLING	1880-1		498 (500-1)	1880-1½ 498 (500-1½)	1940-2 558 (600-2)
					2020-2¼ 638 (700-2¼)

