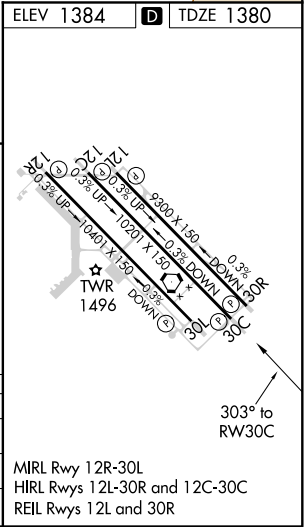
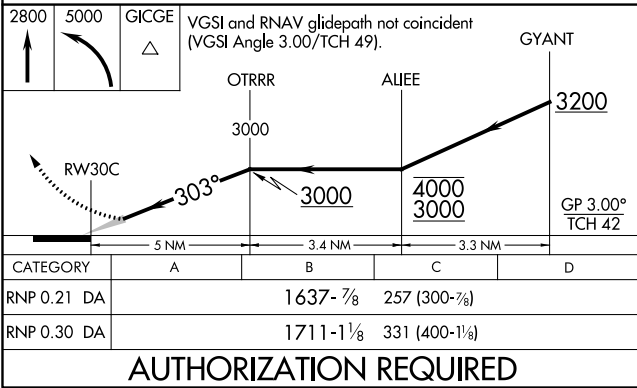
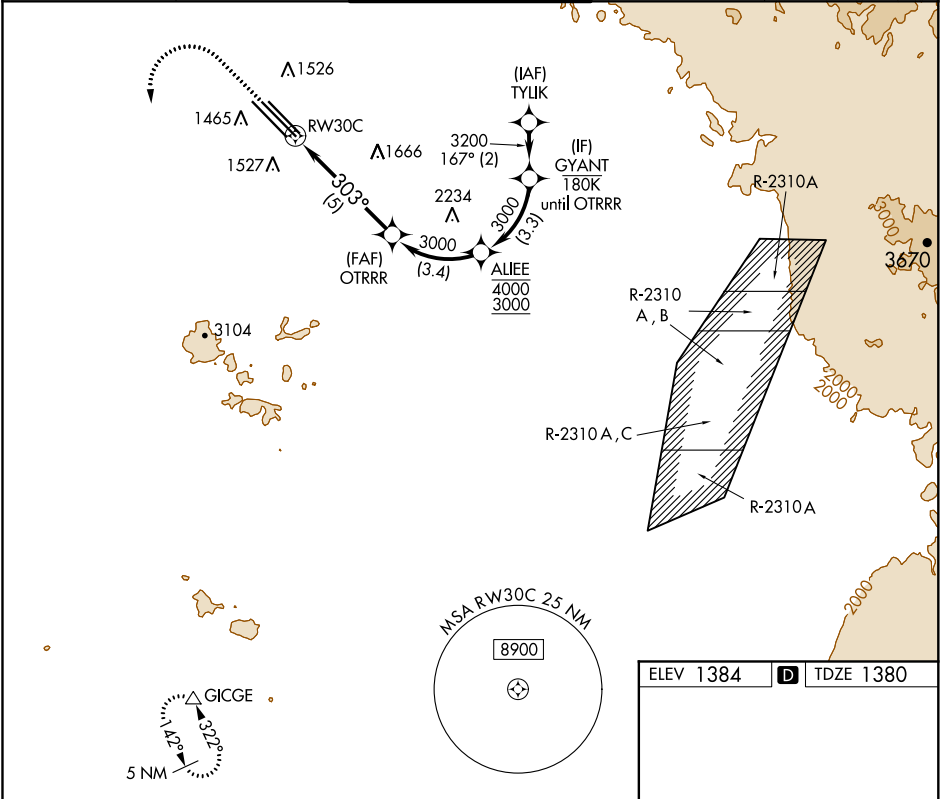


APP CRS	Rwy Idg	10201
303°	TDZE	1380
	Apt Elev	1384

RNAV (RNP) Z RWY 30C
PHOENIX-MESA GATEWAY (IWA)

For uncompensated Baro-VNAV systems, procedure NA below -17°C (2°F) or above 54°C (130°F). GPS and RF required.	MISSED APPROACH: Climb to 2800 then climbing left turn to 5000 direct GICGE and hold.
---	---

ATIS ★ 133.5 270.275	PHOENIX APP CON 124.9 353.8	GATEWAY TOWER ★ 120.6 (CTAF) 289.4	GND CON 128.25 275.8	CLNC DEL 135.05
-------------------------	--------------------------------	---------------------------------------	-------------------------	--------------------



AUTHORIZATION REQUIRED

SW-4, 03 DEC 2020 to 31 DEC 2020

SW-4, 03 DEC 2020 to 31 DEC 2020