

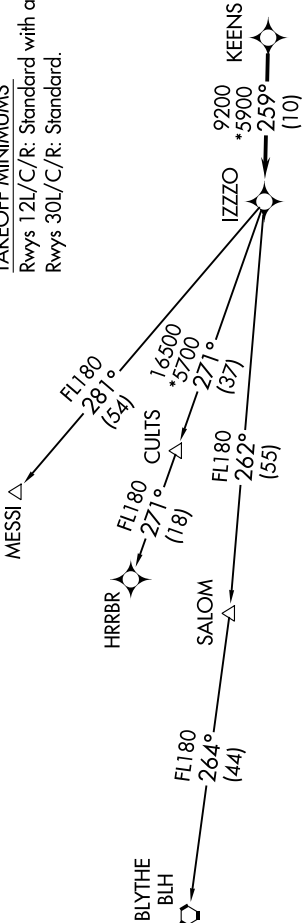
ATIS ★
133.5 270.275
CLNC DEL
135.05
GND CON
128.25 275.8
GATEWAY TOWER ★
120.6 289.4
PHOENIX DEP CON
124.9 353.8

TOP ALTITUDE:
ASSIGNED BY ATC

- RNAV 1.
NOTE: Turbojets and turboprops only.
NOTE: RADAR required.
NOTE: GPS required.
NOTE: Aircraft requesting FL220 and below must file BLYTHE TRANSITION.
NOTE: Turbojets landing LAX, file MESSI TRANSITION.
NOTE: Aircraft landing other than LAX and turboprops landing at LAX: Requesting FL240 and above, file HRRBR TRANSITION.
NOTE: Aircraft departing KGEU and KGYR ATC assigned only.

TAKEOFF MINIMUMS

Rwys 12L/C/R: Standard with a minimum climb of 250' per NM to 3100.
Rwys 30L/C/R: Standard.



DEPARTURE ROUTE DESCRIPTION

TAKEOFF RUNWAYS 12L/C/R: Climb heading 124° or as assigned by ATC, thence. . .
TAKEOFF RUNWAYS 30L/C/R: Climb heading 304° or as assigned by ATC, thence. . .
. . . expect RADAR vectors to KEENS, then on track 259° to IZZO, then on (transition).
Maintain ATC assigned altitude, expect filed altitude 3 minutes after departure.

- BLYTHE TRANSITION (IZZZO7.BLH)
- HRRBR TRANSITION (IZZZO7.HRRBR)
- MESSI TRANSITION (IZZZO7.MESSI)

NOTE: Chart not to scale.